

720 Series





Strong and Refined

Ergonomically constructed to combine comfort with modern design, Maglin's 720 Chaise Lounge enhances your outdoor living experience. The frame is made from laser cut and formed steel, and seats come in your choice of Ipe wood or Powdercoated Steel.

An alternative to the Chaise Lounge – the 720 Lounge Chair option is available in laser cut and formed steel with a variety of Powdercoated selections to choose from. The possibilities are yours to discover!



MCL720-M
Metal



MCL720-W
Ipe Wood



MCCH720-M
Metal

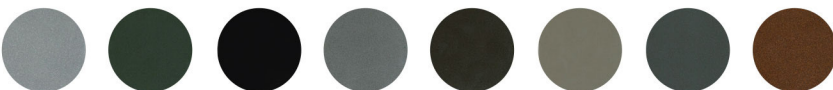
Standard Powdercoat Colors

GLOSS



SILVER 14 EVERGREEN BLACK GUNMETAL BRONZE 14 TITANIUM GRAPHITE

FINE TEXTURED* (matte finish)



SILVER 14 EVERGREEN BLACK GUNMETAL BRONZE 14 TITANIUM SLATE CORE TEN

OTHER COLORS AVAILABLE**



ORANGE IVORY TURQUOISE YELLOW LILAC

*Fine Textured Paint available for an upcharge. Vinyl graphics are not recommended on Fine Textured Powdercoat
**Paint upcharge may apply depending on quantities ordered