



HINO L | SERIES



BUILT FOR COMFORT. BUILT FOR UPTIME.

The HINO L SERIES is engineered to keep your business moving. With a sleek exterior, a driver focused automotive grade interior, and a reputation for quality, durability, and reliability, it's one of Canada's most trusted medium duty trucks.

GVWRs FROM 25,500 TO 35,000 LBS.

Designed to improve uptime and built to work hard, mile after mile. Proudly Built in Canada.

 **BUILT BY CANADIANS, FOR CANADIANS.**

HINO L | SERIES

The HINO L Series is equipped with one of the most **dependable and durable medium-duty engines** available in the industry, the **Cummins® B6.7**.



Engine Warranty

Standard 3 years,
unlimited mileage.*



5 Year Warranty

Allison transmission
warranty coverage
for 5 years, unlimited
mileage at no charge.*



HINOWATCH

24/7 Roadside Assistance
is standard for 3 years on
all HINO trucks with
unlimited mileage.
HINOWATCH includes
lockout, out of fuel,
battery jumpstart and
warranty towing.

STANDARD EQUIPMENT

- Air Conditioning
- AM/FM Audio System with Bluetooth®
- Tilt and Telescopic Steering Column with Lock
- Power Windows & Power Door Locks
- Power and Heated Outer Rear-view Mirrors with Convex Mirrors (2)
- Driver's Seat - High-back Premium Fabric Seat with Air Suspension & Arm Rest
- Passenger Seat - 2-Person Premium Fabric
- Fully Trimmed Cab
- Bright Finish Grille
- Driver Controlled Differential Lock (HINO L8 model)
- 1000W/120V Engine Block Heater
- Air Horn (Air Brake Model)
- Halogen Headlamps

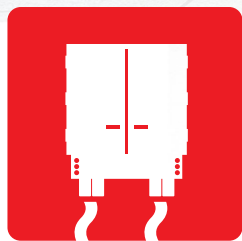
POPULAR OPTIONAL EQUIPMENT

- Hendrickson Rear Air Suspension
- Inner Steel, Outer Aluminum Wheels
- Bright Finish Bumper
- Driver Controlled Differential Lock (HINO L7 models)
- Multimedia Audio System with Bluetooth® and GPS Navigation
- Custom Exterior Paint Colour
- High Visibility Seat Belts
- Fender Mirrors
- AGM Batteries
- Third Battery
- LED Headlamps

[ACTIVE] Safety Systems

HINO L | SERIES

Safety starts before you start the engine. The HINO L Series cab has been designed for safe, easy entry and exit with deep all-weather grip steps, extra wide door openings and available exterior grab handles. A high seating position and a 2,385 sq. in. windshield provide maximum visibility for the driver, illuminated at night with the available LED headlamps. The advanced OnGuardMAX active safety systems are part of an optional Safety Suite package offered on select air brake equipped models.



*Electronic Stability Control

Automatically intervenes when there is a high risk of directional instability that could lead to loss of vehicle control or rollover.

* Features available in optional Safety Suite package on select air brake equipped models.



*Collision Mitigation System

Available radar-based collision mitigation system (OnGuardMAX) provides active braking on moving and stationary vehicles.



*Lane Departure Warning

An available camera-based system that helps reduce road run-offs, side swipes, and head-on collisions due to driver inattention or fatigue through distinct audible warnings for unintentional lane departures.



HINO L | SERIES



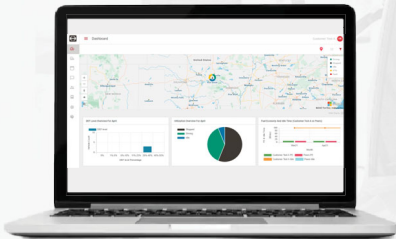
HINO has revolutionized the connected vehicle experience with **HINO EDGE**, connecting customers to the **HINO Ultimate Support Center**, an extensive dealer network, and selected **Telematics Service Providers (TSPs)**. This maximizes truck visibility and service support, ensuring fleets have real-time access to essential information and resources, enhancing efficiency, and delivering the ultimate ownership experience.



Case Management



Get Logged In



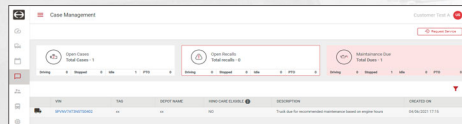
Getting started is easier than ever!

Simply log-in at hinoulimate.com with the username and password provided in your welcome email.

Once logged in, you'll have access to all of your fleet's real time data.

Then it's all about setting the system up the way that works best for you. Just go to the settings section of the portal and you can create new users, change times zones and select your preferred language and unit of measure.

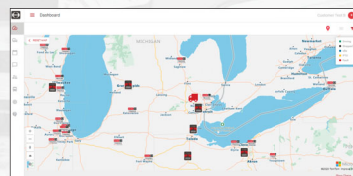
HINO TRUCKS TSP PARTNERS:



You know your truck is in good hands when your Case Management system is powered by Decisiv and easily controlled through the HINO Ultimate Portal. If you have a fault code appear, you'll immediately get an email. Simply reply to that email to speak with a knowledgeable Ultimate Support representative. Then, in the Case Management tab, you can see all open cases.



Dashboard



The HINO Dashboard allows you to view your fleet's location, nearest dealer and how your fleet's utilization compares to others.

With HINO Benchmarking, you'll see a graphical snapshot of how you're doing compared to other similar vehicles in similar situations. Idle times, fuel economy... whatever data you need to optimize the performance of your fleet, you can find it here in real time. Never fly blind again!

Everything you need to maximize your fleet's ROI is right here, right now.

SPECIFICATIONS

ENGINE / DRIVETRAIN / AXLE

Engine model	Cummins® B6.7
Displacement	6.7 litre
Type	6 cylinder in-line, water-cooled
Fuel System	High Pressure Common Rail System
Max. output @ 2,400 rpm	240-260 hp
Max. torque @ 1,600 rpm	600-660 lb.-ft.
Exhaust brake	Integrated with Variable Geometry Turbocharger
Transmission	Allison 6 Speed Automatic with FuelSense2.0 with DynActive Shifting, Neutral at Stop and Acceleration Rate Management
Front axle	Meritor MFS series reverse Elliot, "I" beam (oil lubricated)
Rear axle	Meritor, full floating, single reduction, single-speed, hypoid gears

ELECTRICAL EQUIPMENT

Batteries	STD Two, parallel connection, 1300 CCA (2 x GR31) OPT Third Battery (GR31) OPT AGM Batteries (Quantity: 2) OPT AGM Batteries (Quantity: 3)
Alternator	STD 12V, 135A, Brushless
Starter kW (hp)	Delco Remy 35MT™, 12 Volt, 4.1 kW

TANKS

Fuel Tank	STD Single 189 litre (50 US gallon) OPT Single 340.0 litre (90 US gallon) - L6, L7 & L8
DEF tank litre (US gallon)	28 (7) Optional 59L DEF tank with 90G fuel tank option



Weight Capacities

Front axle range, kg (lbs.): 3,630 (8,000) - 4,540 (10,000)

Rear axle range, kg (lbs.): 7,940 (17,500) - 8,620 (19,000)

HINO L6

GVWR, kg (lbs.): 11,570 (25,500) - 11,793 (26,000)

Engine HP	STD 240 hp	OPT 260 hp (HINO L6L 260HP model)
Transmission model	STD 2200RDS	
	STD Hydraulic disc	OPT Full Air, dual circuit on Low Profile models
Rear suspension	STD Semi-elliptic leaf spring	OPT Hendrickson air suspension with dump valve
Rear axle ratio	STD 5.29 (L6)	STD 4.11 (L6L / L6LAB)
Wheel size	STD 22.5 x 8.25 (L6)	STD 19.5 x 6.75 (L6L); 19.5 x 7.50 (L6LAB)
Tire size	STD 11R22.5 (L6)	STD 245/70R19.5 (L6L / L6LAB)
Resisting bending moment, one side kgf-mm (in-lbs.)	STD 1,188,862 (1,031,900)	
Yield strength, kg/mm2 (psi)	STD 56.2 (80,000)	
Wheel type	STD Powder coated white	OPT Inner Steel / Outer Aluminum
Wheelbase (in.)	175 187 205 217	235 253 271

Weight Capacities

Front axle range, kg (lbs.): 5,440 (12,000)

Rear axle range, kg (lbs.): 9,530 (21,000)

HINO L7

GVWR, kg (lbs.): 14,950 (33,000)

Engine HP	STD 260 hp	
Transmission model	STD 2500RDS	
Brakes	STD Hydraulic, 4 wheel disc	OPT Full Air, dual circuit
Rear suspension	STD Semi-elliptic leaf spring	OPT Hendrickson air suspension with dump valve (STD Air Brake Models)
Rear axle ratio	STD 5.29	
Wheel size	STD 22.5 x 8.25	
Tire size	STD 11R22.5	
Resisting bending moment, one side kgf-mm (in-lbs.)	STD 1,475,588 (1,280,800)	
Yield strength, kg/mm2 (psi)	STD 56.2 (80,000)	
Wheel type	STD Powder coated white	OPT Inner Steel / Outer Aluminum
Wheelbase (in.)	187 205 217 235	253 271 280

Weight Capacities

Front axle range, kg (lbs.): 6,350 (14,000)

Rear axle range, kg (lbs.): 10,430 (23,000)

HINO L8

GVWR, kg (lbs.): 15,870 (35,000)

Engine HP	STD 260 hp	
Transmission model	STD 3000RDS	
Brakes	STD Full air, dual circuit, 4-wheel drum with ABS	
Rear suspension	STD Hendrickson air suspension with dump valve	
Rear axle ratio	STD 5.38	
Wheel size	STD 22.5 x 8.25	
Tire size	STD 295/75R22.5	
Resisting bending moment, one side kgf-mm (in-lbs.)	STD 2,317,900 (1,933,200)	
Yield strength, kg/mm2 (psi)	STD 84.4 (120,000)	
Wheel type	STD Powder coated white	OPT Inner Steel / Outer Aluminum
Wheelbase (in.)	187 205 217 235	253 271