

# Chapter 9

## CHASSIS DRAWINGS

---

1. CAB DRAWINGS
2. CAB BACK DRAWINGS
3. CHASSIS DRAWINGS
4. CHASSIS FRAME DRAWINGS
5. REFERENCE FIGURE FOR SUSPENSION

### **ABOUT CAD-DATA**

**CAD-DATA is contained on separate attachment file in this CD-ROM.**

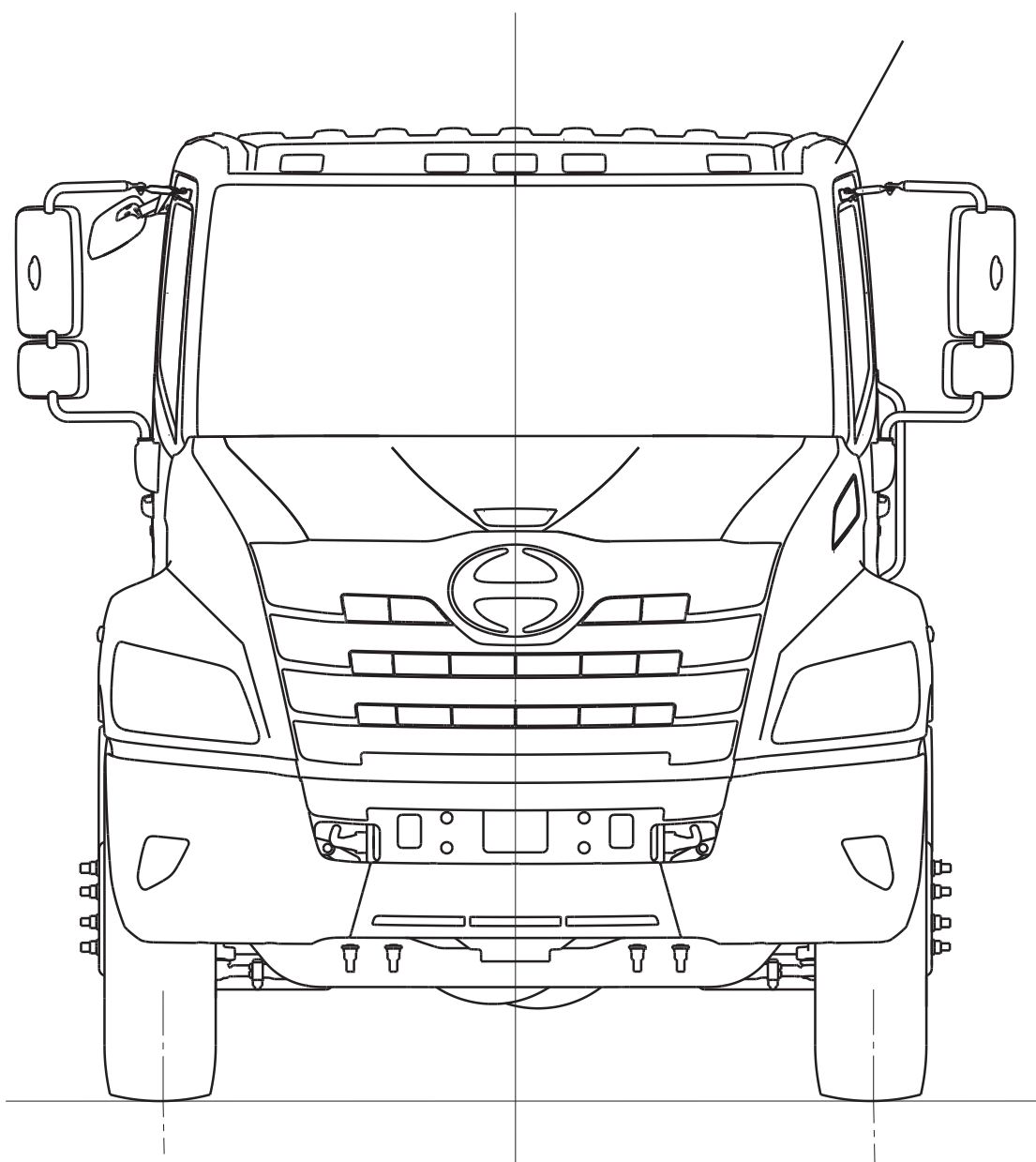
**CONTENTS ; CHASSIS DRAWING**

## 1. CAB DRAWINGS

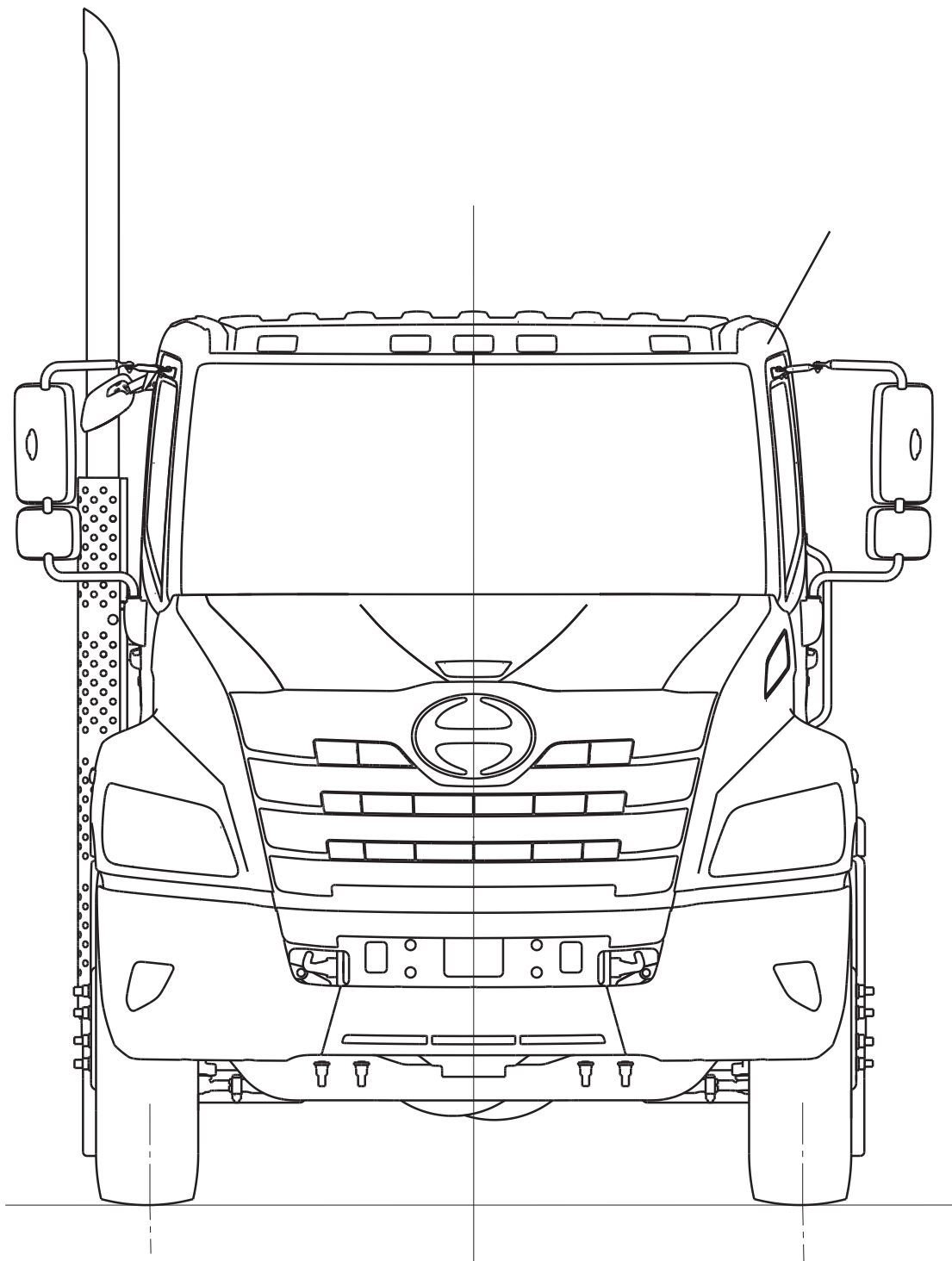
---

### MODEL : ALL

- FRONT SIDE VIEW  
(HORIZONTAL TAIL)



- FRONT SIDE VIEW  
(VERTICAL STACK TAIL)  
< Day Cab ONLY >



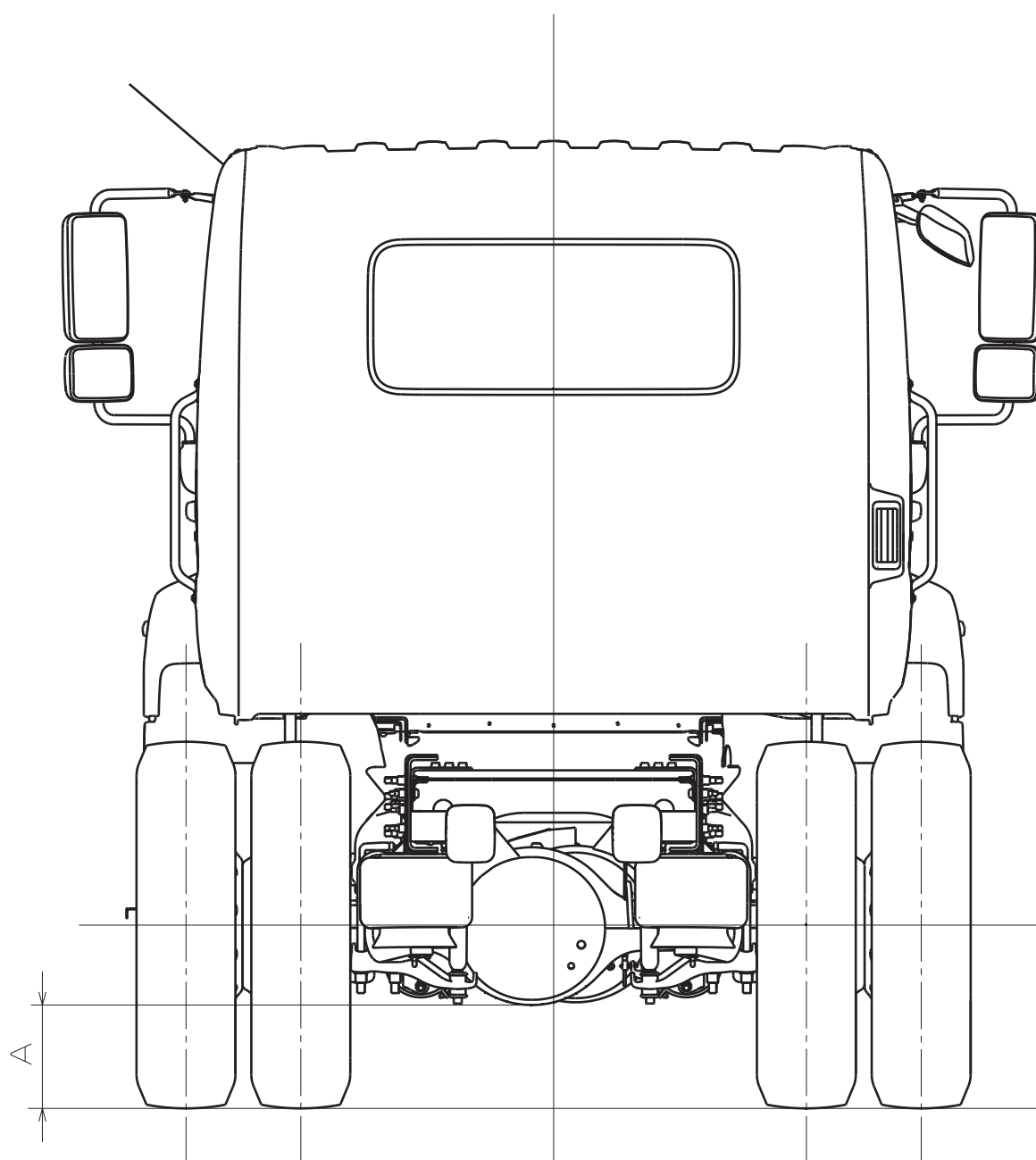
**MODEL : NMC2(XL8)**

- REAR SIDE VIEW  
(REAR AIR SUSPENSION)

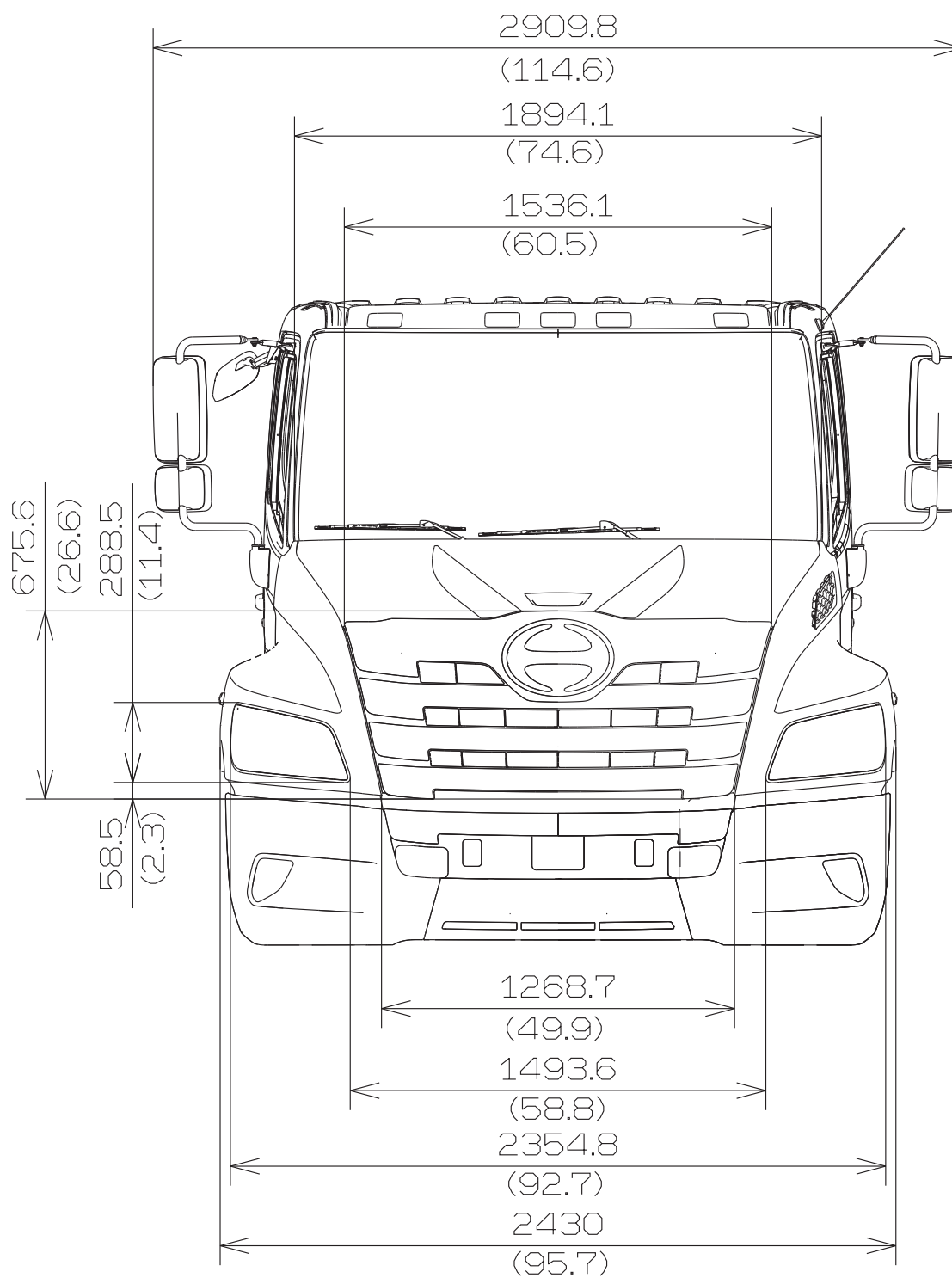
6X4 - AIR

Unit : mm (in.)

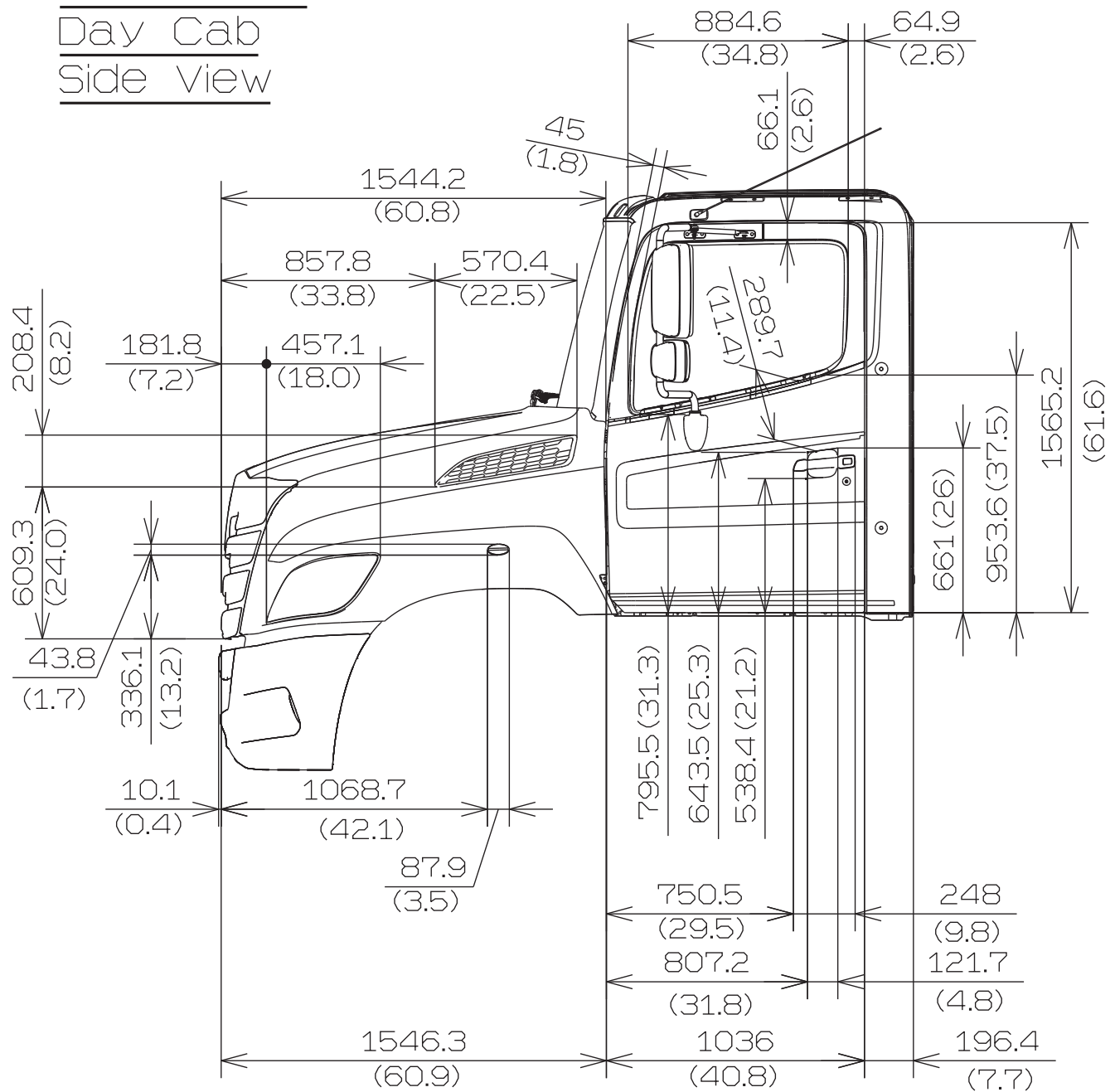
MODEL	RR AXLE	TIRE	A
<b>XL8 (NMC2)</b>	D46-172 (R1) R46-172 (R2)	11R22.5-14	225 (8.9)
		11R22.5-16	
		295/75R22.5-16	213 (8.4)
<b>XL8 (NMC2)</b>	DSH40 (R1) RSH40 (R2)	11R22.5-14	261 (10.3)
		11R22.5-16	
		295/75R22.5-16	250 (9.8)



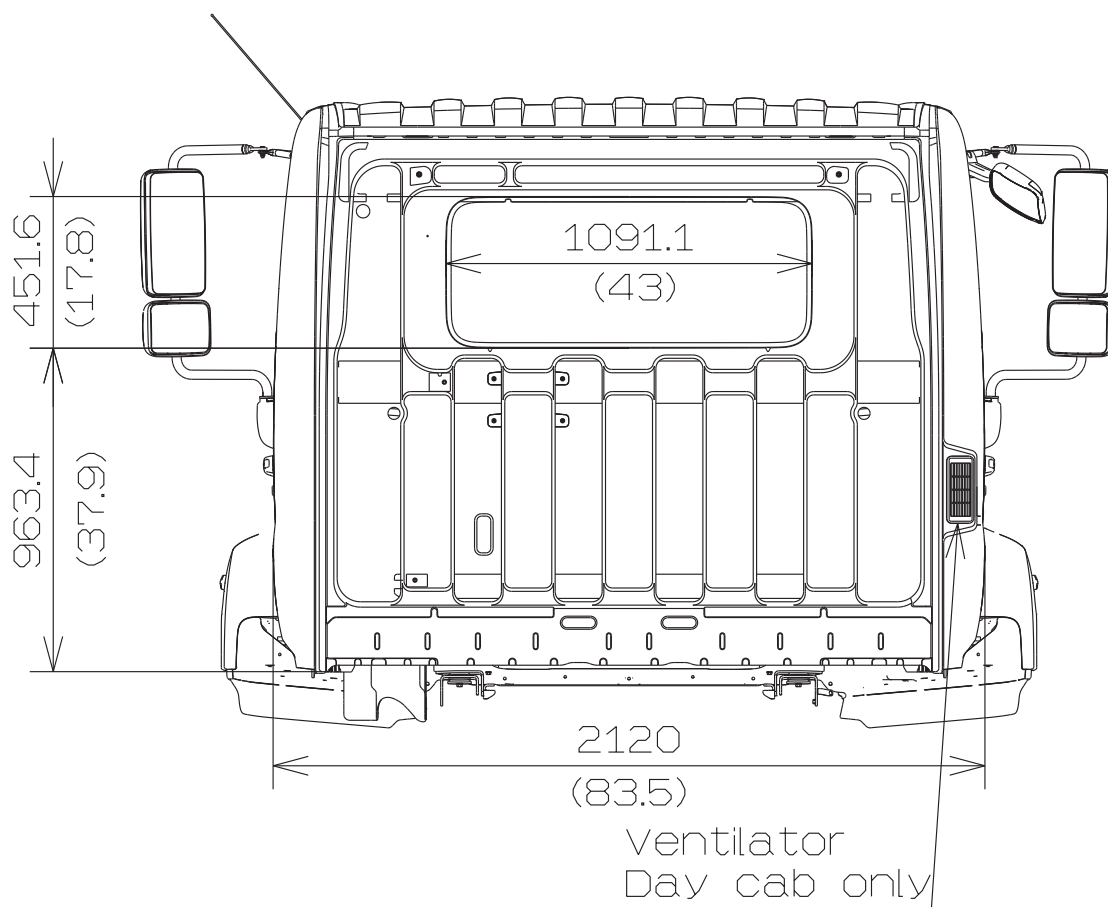
XL-Series  
Day cab  
Front View



XL-Series  
Day Cab  
Side View



XL-Series  
Day cab  
Rear View



## 2. CAB BACK DRAWINGS

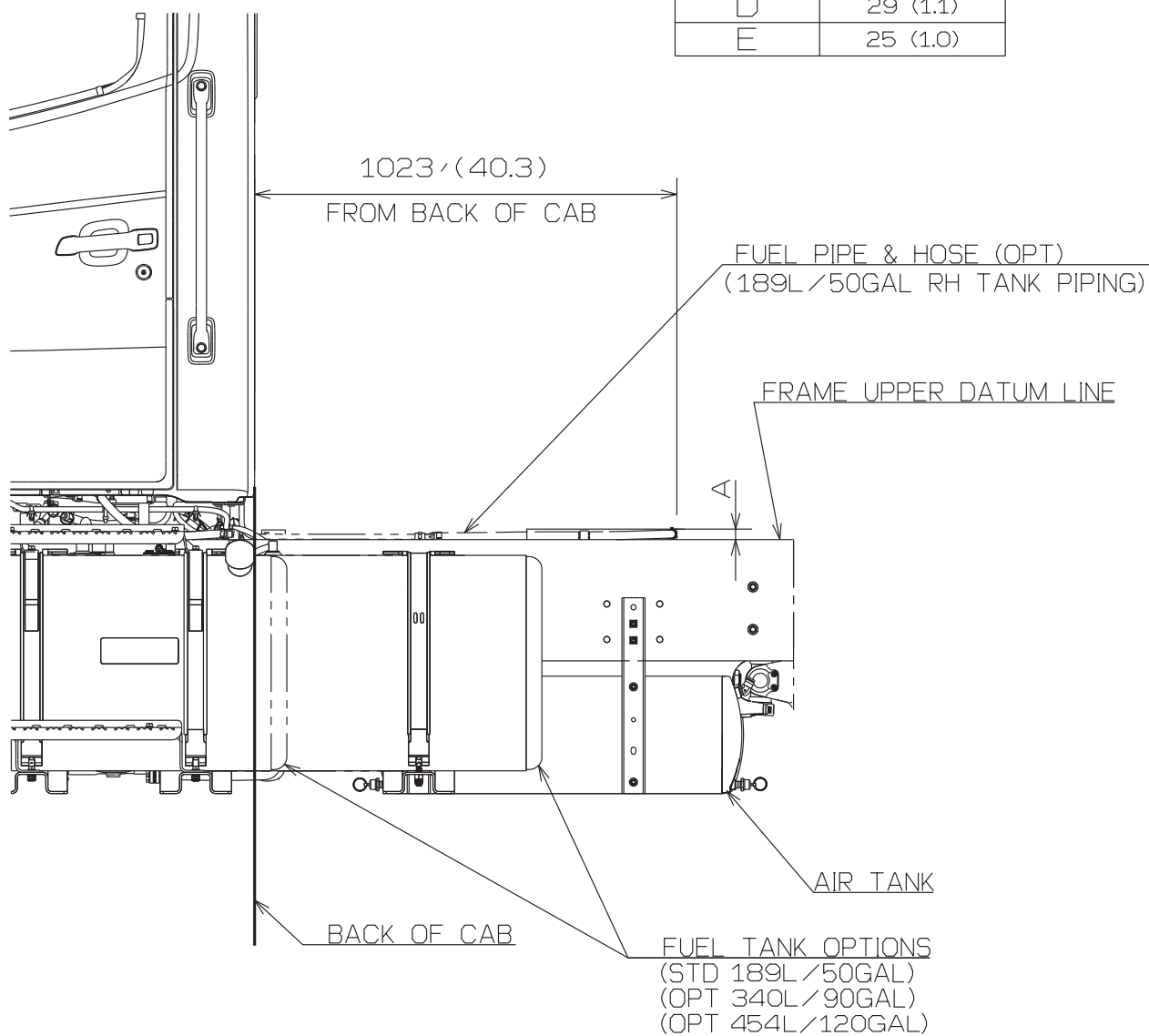
MODEL : NMC2(XL8) < Day Cab >

Unit : mm (in.)

• LEFT SIDE VIEW

FUEL HEIGHT FROM FRAME

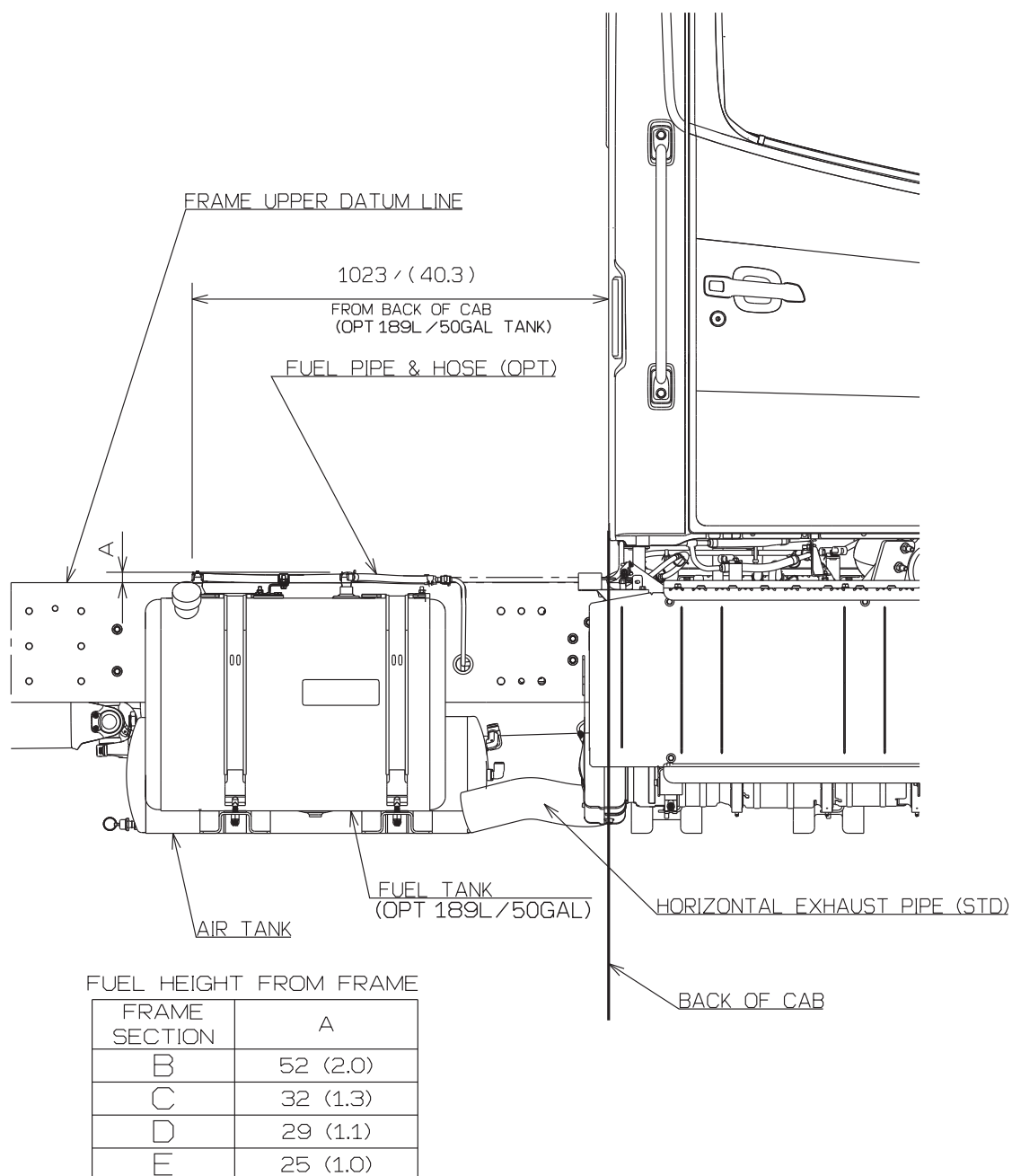
FRAME SECTION	A
B	52 (2.0)
C	32 (1.3)
D	29 (1.1)
E	25 (1.0)





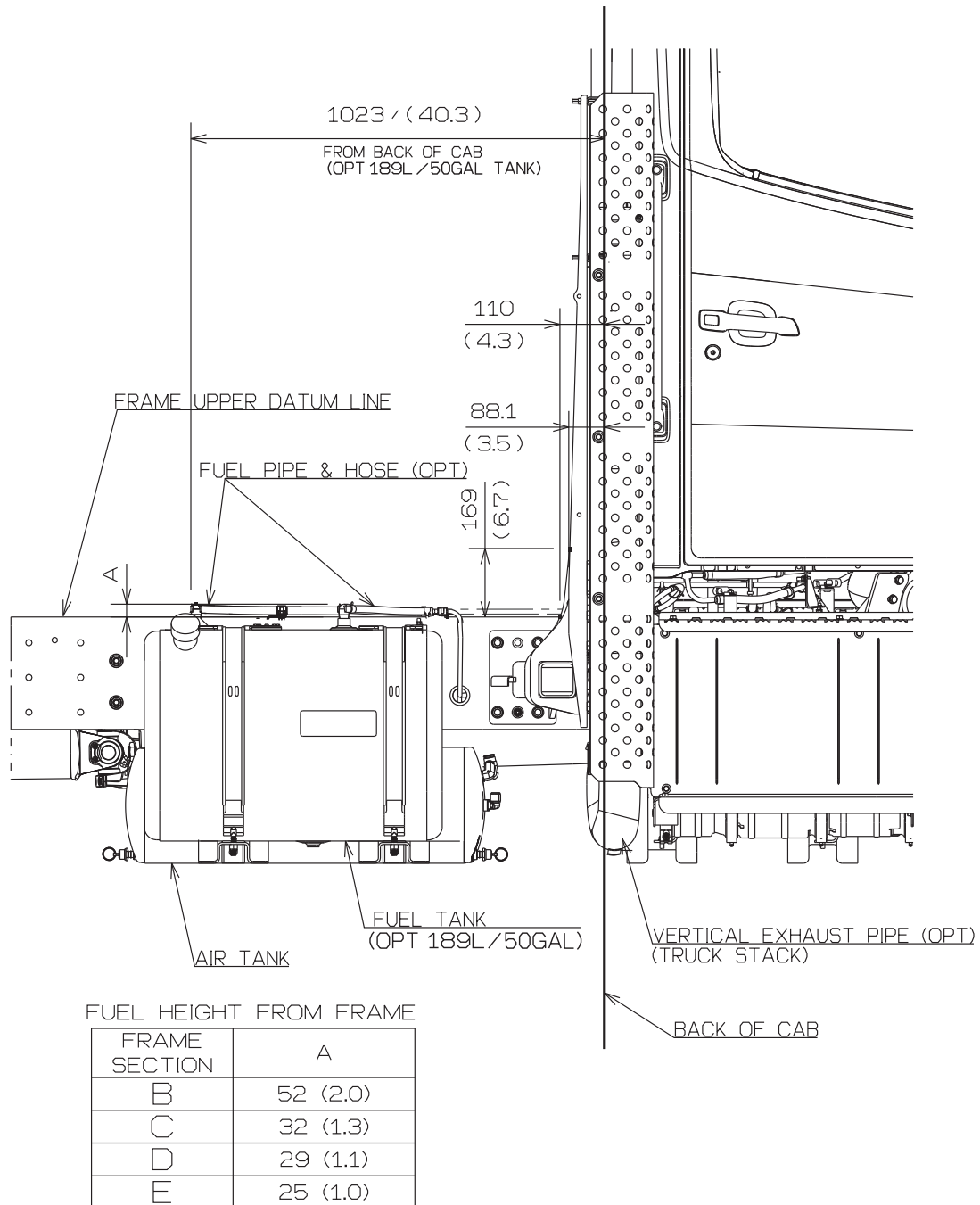
• RIGHT SIDE VIEW  
(HORIZONTAL TAIL)

Unit : mm (in.)



- RIGHT SIDE VIEW  
(VERTICAL STACK TAIL - TRUCK)  
< Day Cab ONLY >

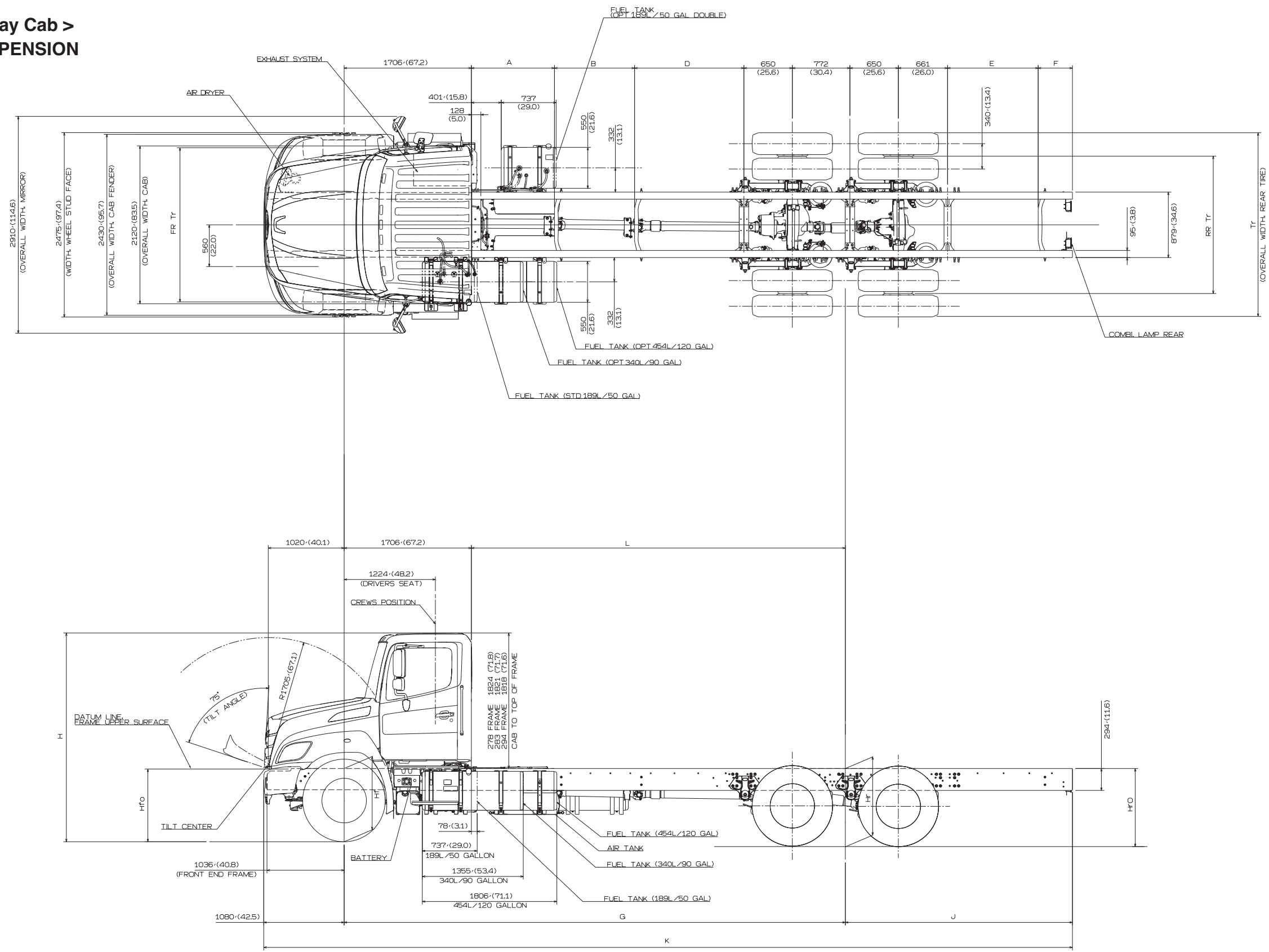
Unit : mm (in.)



3. CHASSIS DRAWINGS

Unit : mm (in.)

MODEL : NMC2(XL8) < Day Cab >  
REAR AIR SUSPENSION



• **MODEL : NMC2(XL8) < Day Cab >**  
**REAR AIR SUSPENSION**

DIMENSION OF CHASSIS

Unit : mm (in.)

Wheelbase		A	B	D	E	F	G	J	K	L
K	4623 (182)	566 (22.3)		985 (38.8)	632 (24.9)	460 (18.1)	4623 (182)	2464 (97)	8166 (321.5)	2916 (114.8)
L	4928 (194)	566 (22.3)		1290 (50.8)	632 (24.9)	460 (18.1)	4928 (194)	2464 (97)	8471 (333.5)	3220 (126.8)
N	5436 (214)	966 (38)	810 (31.9)	588 (23.1)	632 (24.9)	460 (18.1)	5436 (214)	2464 (97)	8979 (353.5)	3728 (146.8)
R	5918 (233)	711 (28)	840 (33.1)	1296 (51)	632 (24.9)	460 (18.1)	5918 (233)	2464 (97)	9461 (372.5)	4211 (165.8)
U	6629 (261)	1116 (43.9)	1075 (42.3)	1367 (53.8)	632 (24.9)	460 (18.1)	6629 (261)	2464 (97)	10172 (400.5)	4922 (193.8)
U option	6731 (265)	1116 (43.9)	1075 (42.3)	1468 (57.8)	632 (24.9)	460 (18.1)	6731 (265)	2464 (97)	10274 (404.5)	5024 (197.8)
V	6985 (275)	1116 (43.9)	1290 (50.8)	1507 (59.3)	632 (24.9)	460 (18.1)	6985 (275)	2464 (97)	10528 (414.5)	5278 (207.8)
W	7137 (281)	1116 (43.9)	1440 (56.7)	1510 (59.4)	632 (24.9)	460 (18.1)	7137 (281)	2464 (97)	10680 (420.5)	5430 (213.8)

• MODEL : NMC2(XL8) < Day Cab >  
REAR AIR 40K SUSPENSION

DIMENSION OF HEIGHT FROM GROUND

Unit : mm (in.)

FR AXLE	TIRE	WHEEL	WHEELBASE		GROUND HEIGHT FRAME UPPER SURFACE				H CAB	H Vert Stack	ROH
					HfO	Hf	Hr	HrO			
14600lbs	11R22.5	22.5X8.25	K	4623 (182)	899 (35.4)	914 (36)	983 (38.7)	1039 (40.9)	2761 (108.7)	3721 (146.5)	2464 (97)
				L	4928 (194)	899 (35.4)	914 (36)	983 (38.7)	1036 (40.8)	2760 (108.7)	3719 (146.4)
			N	5436 (214)	901 (35.5)	914 (36)	983 (38.7)	1032 (40.6)	2758 (108.6)	3717 (146.3)	2464 (97)
				R	5918 (233)	902 (35.5)	917 (36.1)	983 (38.7)	1030 (40.6)	2757 (108.5)	3715 (146.3)
			U	6629 (261)	908 (35.7)	919 (36.2)	988 (38.9)	1031 (40.6)	2757 (108.5)	3715 (146.3)	2464 (97)
				U option	6731 (265)	908 (35.7)	919 (36.2)	988 (38.9)	1031 (40.6)	2756 (108.5)	3715 (146.3)
			V	6985 (275)	915 (36)	925 (36.4)	994 (39.1)	1039 (40.9)	2760 (108.7)	3719 (146.4)	2464 (97)
				W	7137 (281)	915 (36)	925 (36.4)	994 (39.1)	1039 (40.9)	2760 (108.7)	3718 (146.4)
	FR 295/75R22.5 RR 295/75R22.5	22.5X8.25	K	4623 (182)	887 (34.9)	902 (35.5)	968 (38.1)	1023 (40.3)	2749 (108.2)	3708 (146)	2464 (97)
				L	4928 (194)	888 (35)	902 (35.5)	968 (38.1)	1020 (40.2)	2747 (108.1)	3707 (145.9)
			N	5436 (214)	889 (35)	902 (35.5)	968 (38.1)	1017 (40)	2745 (108.1)	3704 (145.8)	2464 (97)
				R	5918 (233)	890 (35)	902 (35.5)	968 (38.1)	1014 (39.9)	2744 (108)	3703 (145.8)
			U	6629 (261)	897 (35.3)	907 (35.7)	973 (38.3)	1016 (40)	2744 (108)	3703 (145.8)	2464 (97)
				U option	6731 (265)	897 (35.3)	907 (35.7)	973 (38.3)	1015 (40)	2744 (108)	3703 (145.8)
			V	6985 (275)	904 (35.6)	913 (35.9)	979 (38.5)	1024 (40.3)	2748 (108.2)	3706 (145.9)	2464 (97)
				W	7137 (281)	904 (35.6)	913 (35.9)	979 (38.5)	1024 (40.3)	2747 (108.1)	3706 (145.9)
	12R22.5	22.5X9.00	K	4623 (182)	923 (36.3)	934 (36.8)	983 (38.7)	1028 (40.5)	2775 (109.3)	3734 (147)	2464 (97)
				L	4928 (194)	924 (36.4)	934 (36.8)	983 (38.7)	1026 (40.4)	2774 (109.2)	3733 (147)
			N	5436 (214)	925 (36.4)	934 (36.8)	983 (38.7)	1023 (40.3)	2773 (109.2)	3731 (146.9)	2464 (97)
				R	5918 (233)	925 (36.4)	934 (36.8)	983 (38.7)	1021 (40.2)	2771 (109.1)	3730 (146.9)
			U	6629 (261)	931 (36.7)	939 (37)	988 (38.9)	1024 (40.3)	2772 (109.1)	3730 (146.9)	2464 (97)
				U option	6731 (265)	931 (36.7)	939 (37)	988 (38.9)	1023 (40.3)	2772 (109.1)	3730 (146.9)
			V	6985 (275)	938 (36.9)	945 (37.2)	994 (39.1)	1032 (40.6)	2776 (109.3)	3734 (147)	2464 (97)
				W	7137 (281)	938 (36.9)	945 (37.2)	994 (39.1)	1032 (40.6)	2776 (109.3)	3734 (147)
	FR 315/80R22.5 RR 295/75R22.5	FR 22.5X9.00 RR 22.5x8.25	K	4623 (182)	934 (36.8)	940 (37)	968 (38.1)	1003 (39.5)	2774 (109.2)	3732 (146.9)	2464 (97)
				L	4928 (194)	934 (36.8)	940 (37)	968 (38.1)	1001 (39.4)	2774 (109.2)	3732 (146.9)
			N	5436 (214)	935 (36.8)	940 (37)	968 (38.1)	999 (39.3)	2773 (109.2)	3731 (146.9)	2464 (97)
				R	5918 (233)	935 (36.8)	940 (37)	968 (38.1)	998 (39.3)	2772 (109.1)	3730 (146.9)
			U	6629 (261)	941 (37)	945 (37.2)	973 (38.3)	1001 (39.4)	2774 (109.2)	3731 (146.9)	2464 (97)
				U option	6731 (265)	941 (37)	945 (37.2)	973 (38.3)	1001 (39.4)	2773 (109.2)	3731 (146.9)
			V	6985 (275)	947 (37.3)	951 (37.4)	979 (38.5)	1011 (39.8)	2778 (109.4)	3735 (147)	2464 (97)
				W	7137 (281)	947 (37.3)	951 (37.4)	979 (38.5)	1010 (40)	2777 (109.3)	3735 (147)
16000lbs	315/80R22.5	22.5x9.00	K	4623 (182)	939 (37)	947 (37.3)	978 (38.5)	1017 (40)	2782 (109.5)	3740 (147.2)	2464 (97)
				L	4928 (194)	940 (37)	947 (37.3)	978 (38.5)	1015 (40)	2781 (109.5)	3739 (147.2)
			N	5436 (214)	943 (37.1)	950 (37.4)	981 (38.6)	1016 (40)	2780 (109.4)	3738 (147.2)	2464 (97)
				R	5918 (233)	944 (37.2)	950 (37.4)	981 (38.6)	1014 (39.9)	2780 (109.4)	3738 (147.2)

[NOTE]

- FRAME HEIGHTS ARE BASED ON SMALLEST FRAME SECTION AVAILABLE FOR A GIVEN WHEELBASE AND GAWR.
- HEIGHTS BASED ON 11R22.5 REAR TIRES UNLESS SHOWN OTHERWISE.
- ADDITIONAL DIMENSIONS CAN BE PROVIDED WITH REQUEST TO SALES REP.

• **MODEL : NMC2(XL8) < Day Cab >**  
**REAR AIR 46K SUSPENSION**

DIMENSION OF HEIGHT FROM GROUND

Unit : mm (in.)

FR AXLE	TIRE	WHEEL	WHEELBASE		GROUND HEIGHT FRAME UPPER SURFACE				H CAB	H Vert Stack	ROH
					HfO	Hf	Hr	HrO			
14600lbs	11R22.5	22.5X8.25	K	4623 (182)	895 (35.2)	914 (36)	1000 (39.4)	1064 (41.9)	2767 (108.9)	3728 (146.8)	2464 (97)
			L	4928 (194)	896 (35.3)	914 (36)	1000 (39.4)	1061 (41.8)	2766 (108.9)	3726 (146.7)	2464 (97)
			N	5436 (214)	897 (35.3)	914 (36)	1000 (39.4)	1056 (41.6)	2763 (108.8)	3723 (146.6)	2464 (97)
			R	5918 (233)	899 (35.4)	914 (36)	1000 (39.4)	1053 (41.5)	2761 (108.7)	3721 (146.5)	2464 (97)
			U	6629 (261)	902 (35.5)	921 (36.3)	1007 (39.6)	1059 (41.7)	2761 (108.7)	3720 (146.5)	2464 (97)
			U option	6731 (265)	908 (35.7)	921 (36.3)	1007 (39.6)	1058 (41.7)	2760 (108.7)	3720 (146.5)	2464 (97)
	FR 295/75R22.5 RR 295/75R22.5	22.5X8.25	K	4623 (182)	883 (34.8)	902 (35.5)	987 (38.9)	1049 (41.3)	2755 (108.5)	3715 (146.3)	2464 (97)
			L	4928 (194)	884 (34.8)	902 (35.5)	987 (38.9)	1046 (41.2)	2753 (108.4)	3713 (146.2)	2464 (97)
			N	5436 (214)	886 (34.9)	902 (35.5)	987 (38.9)	1042 (41.)	2751 (108.3)	3710 (146.1)	2464 (97)
			R	5918 (233)	887 (34.9)	902 (35.5)	987 (38.9)	1038 (40.9)	2749 (108.2)	3708 (146)	2464 (97)
			U	6629 (261)	896 (35.3)	909 (35.8)	994 (39.1)	1045 (41.1)	2748 (108.2)	3708 (146)	2464 (97)
			U option	6731 (265)	896 (35.3)	909 (35.8)	994 (39.1)	1044 (41.1)	2748 (108.2)	3707 (145.9)	2464 (97)
	12R22.5	22.5X9.00	K	4623 (182)	919 (36.2)	934 (36.8)	1000 (39.4)	1053 (41.5)	2781 (109.5)	3740 (147.2)	2464 (97)
			L	4928 (194)	920 (36.2)	934 (36.8)	1000 (39.4)	1051 (41.4)	2779 (109.4)	3739 (147.2)	2464 (97)
			N	5436 (214)	921 (36.3)	934 (36.8)	1000 (39.4)	1047 (41.2)	2778 (109.4)	3737 (147.1)	2464 (97)
			R	5918 (233)	922 (36.3)	934 (36.8)	1000 (39.4)	1044 (41.1)	2776 (109.3)	3735 (147)	2464 (97)
			U	6629 (261)	931 (36.7)	941 (37)	1007 (39.6)	1052 (41.4)	2776 (109.3)	3735 (147)	2464 (97)
			U option	6731 (265)	931 (36.7)	941 (37)	1007 (39.6)	1051 (41.4)	2776 (109.3)	3735 (147)	2464 (97)
	FR 315/80R22.5 RR 295/75R22.5	FR 22.5X9.00 RR 22.5x8.25	K	4623 (182)	930 (36.6)	940 (37)	987 (38.9)	1029 (40.5)	2781 (109.5)	3739 (147.2)	2464 (97)
			L	4928 (194)	930 (36.6)	940 (37)	987 (38.9)	1027 (40.4)	2780 (109.4)	3738 (147.2)	2464 (97)
			N	5436 (214)	931 (36.7)	940 (37)	987 (38.9)	1024 (40.3)	2778 (109.4)	3737 (147.1)	2464 (97)
			R	5918 (233)	932 (36.7)	940 (37)	987 (38.9)	1022 (40.2)	2777 (109.3)	3735 (147)	2464 (97)
			U	6629 (261)	940 (37)	947 (37.3)	994 (39.1)	1030 (40.6)	2778 (109.4)	3736 (147.1)	2464 (97)
			U option	6731 (265)	940 (37)	947 (37.3)	994 (39.1)	1030 (40.6)	2778 (109.4)	3736 (147.1)	2464 (97)
16000lbs	315/80R22.5	22.5x9.00	K	4623 (182)	935 (36.8)	947 (37.3)	1000 (39.4)	1048 (41.3)	2789 (109.8)	3748 (147.6)	2464 (97)
			L	4928 (194)	935 (36.8)	947 (37.3)	1000 (39.4)	1046 (41.2)	2788 (109.8)	3747 (147.5)	2464 (97)
			N	5436 (214)	939 (37)	950 (37.4)	1003 (39.5)	1046 (41.2)	2787 (109.7)	3745 (147.4)	2464 (97)
			R	5918 (233)	942 (37.1)	952 (37.5)	1005 (39.6)	1049 (41.3)	2785 (109.6)	3744 (147.4)	2464 (97)

[NOTE]

• FRAME HEIGHTS ARE BASED ON SMALLEST FRAME SECTION AVAILABLE FOR A GIVEN WHEELBASE AND GAWR.

• HEIGHTS BASED ON 11R22.5 REAR TIRES UNLESS SHOWN OTHERWISE.

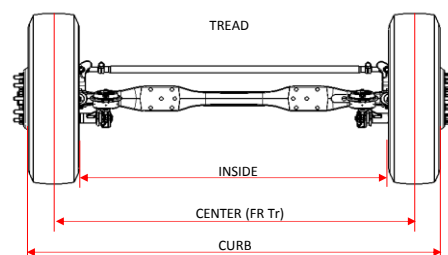
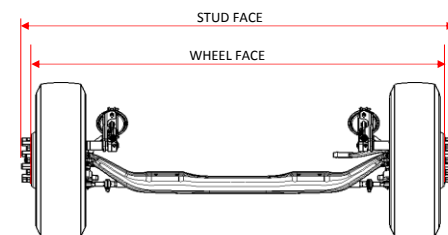
• ADDITIONAL DIMENSIONS CAN BE PROVIDED WITH REQUEST TO SALES REP.

• **MODEL : NMC2(XL8) < Day Cab >**  
**REAR AIR SUSPENSION**

Unit : mm (in.)

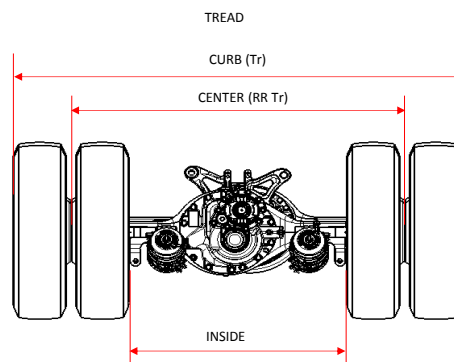
DIMENSION OF WIDTH : FRONT

DIMENSION OF TRUCK FRONT									
MODEL	FR AXLE	TIRE	WHEEL	DISC	BRAKES	FR Tr	FR CURB	FR WHL	FR STUD
NMC2 (XL8)	14600LBS	11R22.5	22.5X8.25	ALUM	DRUM / DISC	2103 (82.8)	2382 (93.8)	2439 (96)	2532 (99.7)
				STEEL		2081 (81.9)	2360 (92.9)	2416 (95.1)	
		295/75R22.5		ALUM		2103 (82.8)	2394 (94.3)	2439 (96)	
				STEEL		2081 (81.9)	2372 (93.4)	2416 (95.1)	
		12R22.5	22.5X9.00	ALUM		2088 (82.2)	2388 (94)	2444 (96.2)	
				STEEL		2070 (81.5)	2370 (93.3)	2426 (95.5)	
		315/80R22.5		ALUM		2088 (82.2)	2400 (94.5)	2444 (96.2)	
				STEEL		2070 (81.5)	2382 (93.8)	2426 (95.5)	
	16000LBS	315/80R22.5	22.5X9.00	STEEL	DRUM	2070 (81.5)	2382 (93.8)	2362 (93)	2472 (97.3)
					DISC	2084 (82)	2396 (94.3)	2377 (93.6)	2481 (97.7)



DIMENSION OF WIDTH : REAR

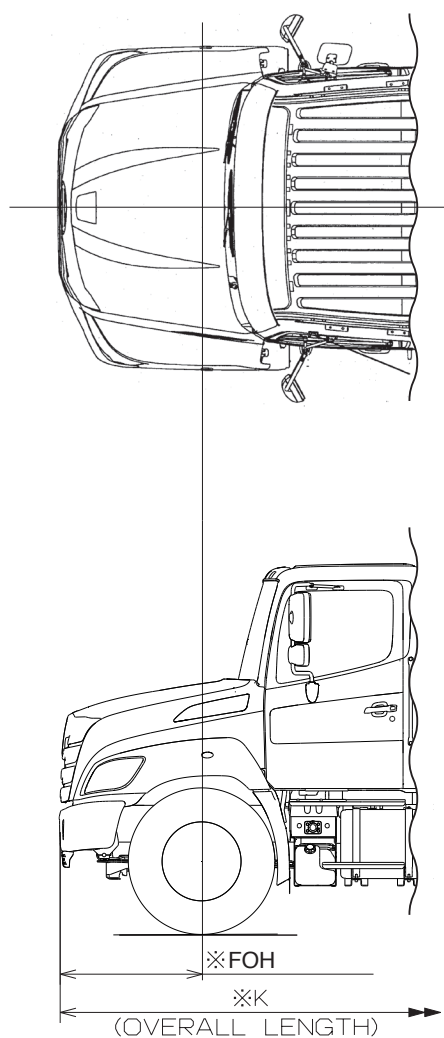
DIMENSION OF WIDTH : REAR								
MODEL	RR AXLE	TIRE	WHEEL	DISC	BRAKES	RR Tr	Tr	
NMC2 (XL8)	40000LBS / 46000LBS	11R22.5	22.5X8.25	ALUM	DRUM	1865 (73.4)	2480 (97.6)	
				STEEL		1843 (72.6)	2457 (96.7)	
		295/75R22.5		ALUM		1865 (73.4)	2491 (98.1)	
				STEEL		1843 (72.6)	2469 (97.2)	
		12R22.5	22.5X9.00	ALUM		1871 (73.7)	2526 (99.4)	
				STEEL		1853 (73)	2508 (98.7)	
		315/80R22.5		ALUM		1871 (73.7)	2538 (99.9)	
				STEEL		1853 (73)	2520 (99.2)	
		455/55R22.5	22.5X14.00	STEEL		1853 (73)	2305 (90.7)	
		11R22.5	22.5X8.25	ALUM		DISC	1864 (73.4)	2478 (97.6)
				STEEL	1841 (72.5)		2456 (96.7)	
				295/75R22.5	ALUM		1864 (73.4)	2489 (98)
					STEEL		1841 (72.5)	2467 (97.1)
			12R22.5	22.5X9.00	ALUM		1869 (73.6)	2525 (99.4)
					STEEL		1851 (72.9)	2507 (98.7)
			315/80R22.5		ALUM		1869 (73.6)	2537 (99.9)
					STEEL		1851 (72.9)	2519 (99.2)
		455/55R22.5	22.5X14.00	STEEL	1851 (72.9)		2303 (90.7)	



NOTE: Additional dimensions can be provided with request to Sales Rep.

• **MODEL : NMC2(XL8) < Day Cab >**  
**REAR AIR SUSPENSION**

**OPTIONAL BUMPER**



**DIMENSION OF CHASSIS**

Unit : mm (in.)

Wheelbase		FOH	K
K	4623 (182)	1181 (46.5)	8267 (325.5)
L	4928 (194)	1181 (46.5)	8572 (337.5)
N	5436 (214)	1181 (46.5)	9080 (357.5)
R	5918 (233)	1181 (46.5)	9563 (376.5)
U	6629 (261)	1181 (46.5)	10274 (404.5)
U option	6731 (265)	1181 (46.5)	10376 (408.5)
V	6985 (275)	1181 (46.5)	10630 (418.5)
W	7137 (281)	1181 (46.5)	10782 (424.5)

NOTE:1.FIGURES MARKED "※" ARE DIMENSIONS MEASURED  
 IN PARALLEL WITH THE SURFACE OF THE GROUND.  
 2.DIMENSIONS IN ( ) ARE INCHES.

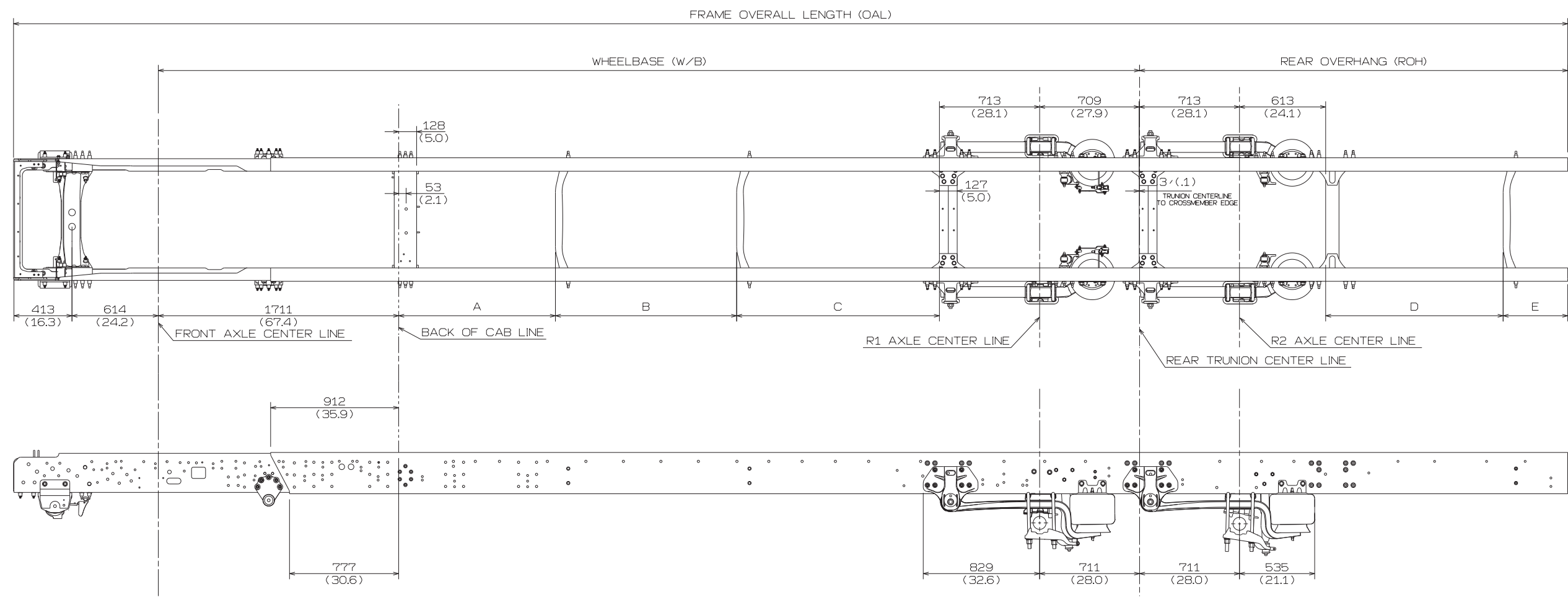


4. CHASSIS FRAME DRAWINGS

Unit : mm (in.)

MODEL : NMC2(XL8) < Day Cab >  
REAR AIR SUSPENSION

1) DETAIL OF CHASSIS FRAME



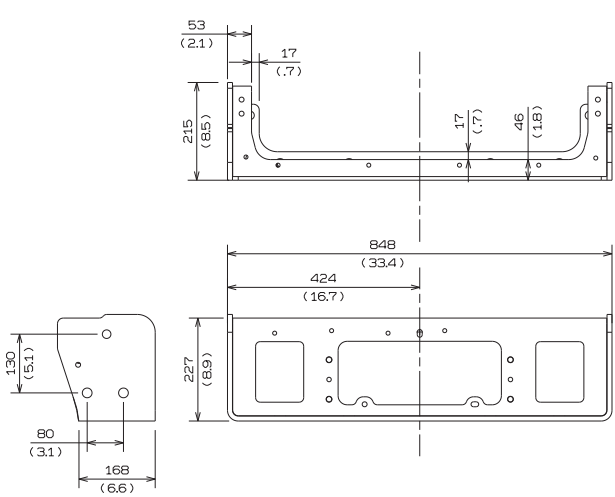
DIMENSION OF CHASSIS

Unit : mm (in.)

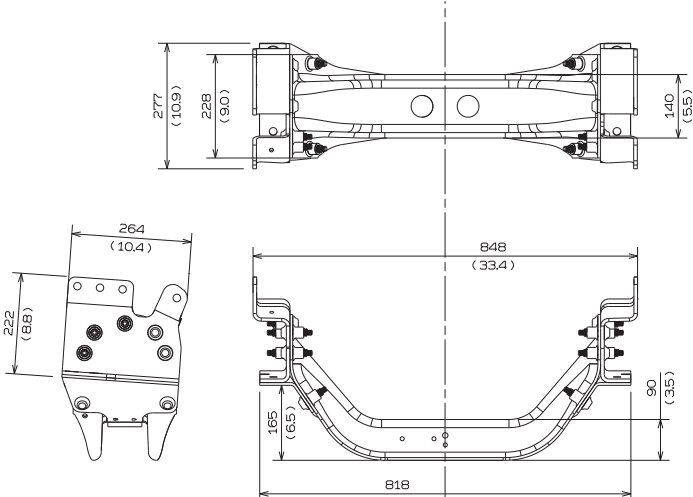
Wheelbase		A	B	C	D	E	ROH	OAL
K	4623 (182)	566 (22.3)	922 (36.3)		632 (24.9)	460 (18.1)	2464 (97)	8117 (320)
L	4928 (194)	566 (22.3)	1227 (48.3)		632 (24.9)	460 (18.1)	2464 (97)	8421 (332)
N	5436 (214)	966 (38)	810 (31.9)	525 (20.7)	632 (24.9)	460 (18.1)	2464 (97)	8929 (352)
R	5918 (233)	711 (28)	840 (33.1)	1232 (48.5)	632 (24.9)	460 (18.1)	2464 (97)	9412 (371)
U	6629 (261)	1116 (43.9)	1075 (42.3)	1304 (51.3)	632 (24.9)	460 (18.1)	2464 (97)	10123 (399)
U option	6731 (265)	1116 (43.9)	1075 (42.3)	1405 (55.3)	632 (24.9)	460 (18.1)	2464 (97)	10225 (403)
V	6985 (275)	1116 (43.9)	1290 (50.8)	1443 (56.8)	632 (24.9)	460 (18.1)	2464 (97)	10479 (413)
W	7137 (281)	1116 (43.9)	1440 (56.7)	1447 (57)	632 (24.9)	460 (18.1)	2464 (97)	10631 (419)

2) DETAIL OF CROSSMEMBER

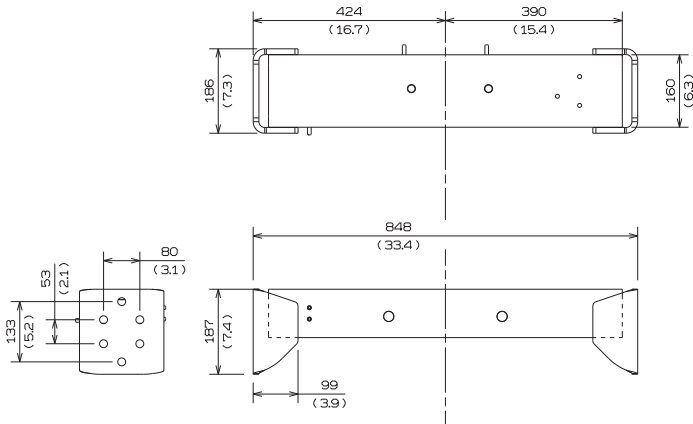
Unit : mm (in.)



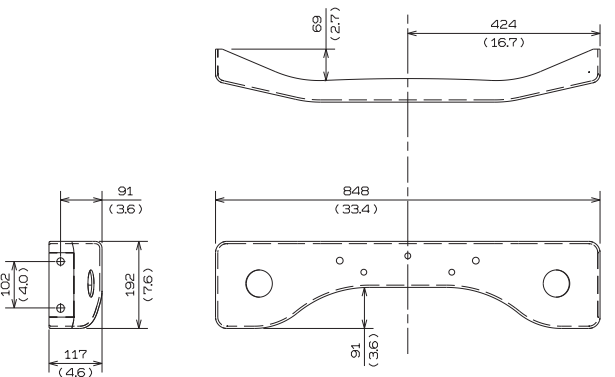
NO.1 CROSSMEMBER



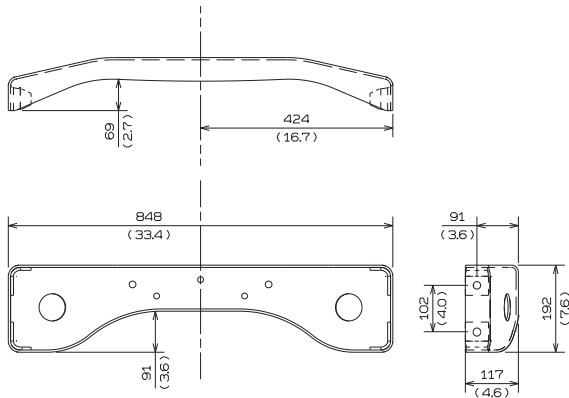
NO.2 CROSSMEMBER



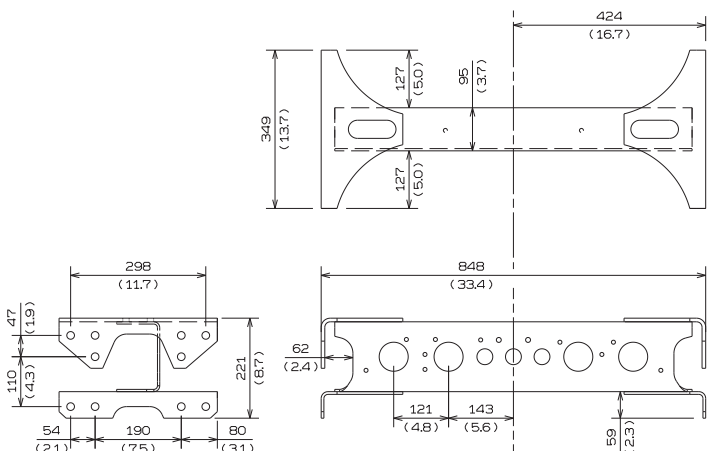
NO.3 CROSSMEMBER



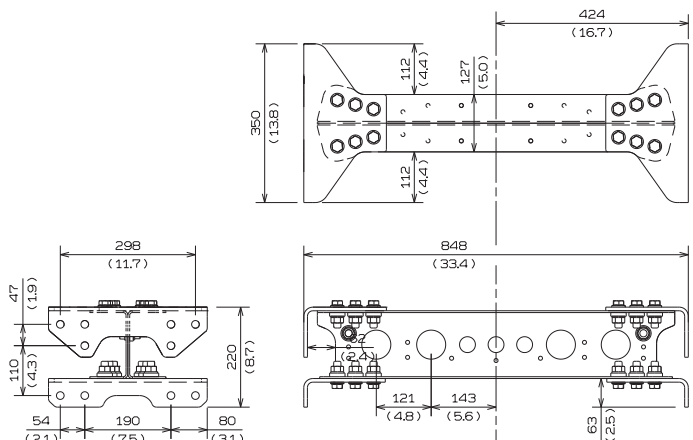
DOGBONE STYLE CROSSMEMBER  
(NON-REINFORCED)



DOGBONE STYLE CROSSMEMBER  
(REINFORCED)



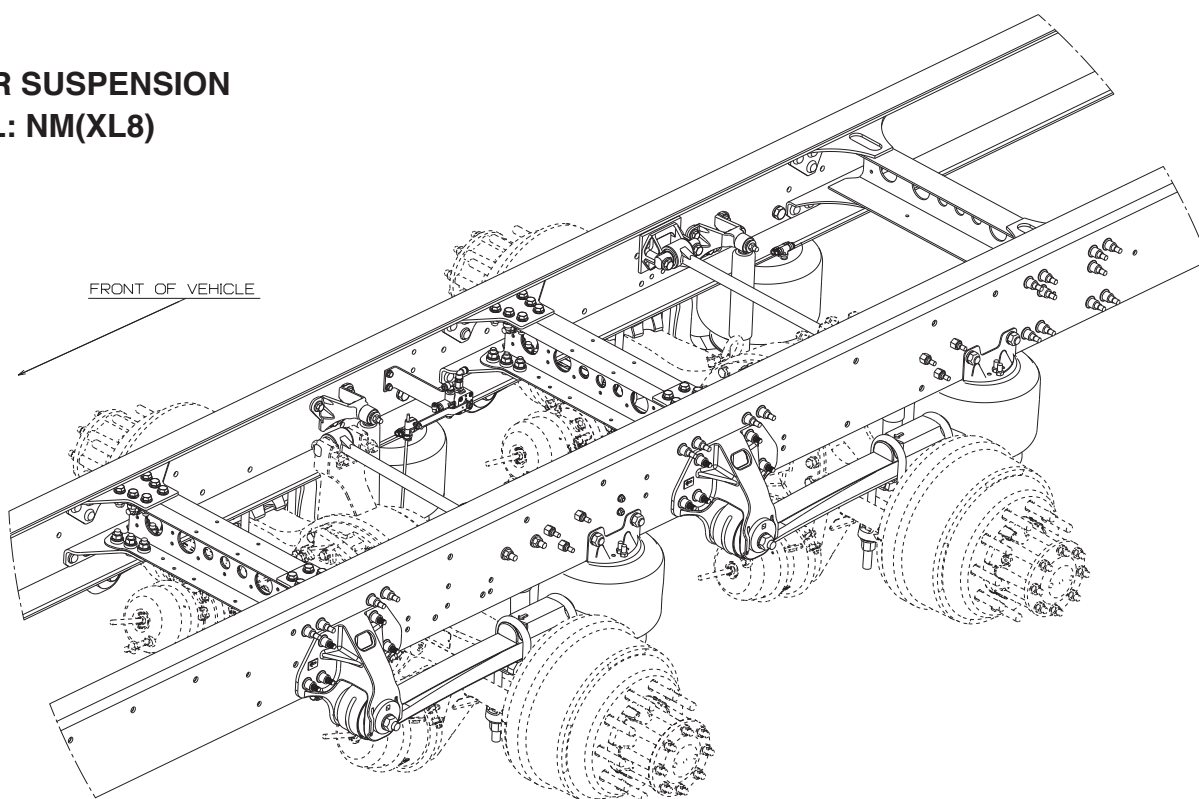
WELDED STYLE CROSSMEMBER



BOLTED STYLE CROSSMEMBER

## 5. REFERENCE FIGURE FOR SUSPENSION

### 40K AIR SUSPENSION MODEL: NM(XL8)



### 46K AIR SUSPENSION MODEL: NM(XL8)

