

HINO XL | SERIES



HINO enters the Class 8 straight truck market with the new HINO XL8, offering quality, durability, and reliability in a 6x4 configuration. It features a powerful Cummins® L9 engine and offers the optional ONGuardMAX advanced Safety Suite. Ideal for many heavy-duty applications, the HINO XL8 boasts a Gross Vehicle Weight Rating (GVWR) ranging from 53,200 lbs. to 54,000 lbs. Best of all, it's BUILT IN CANADA!

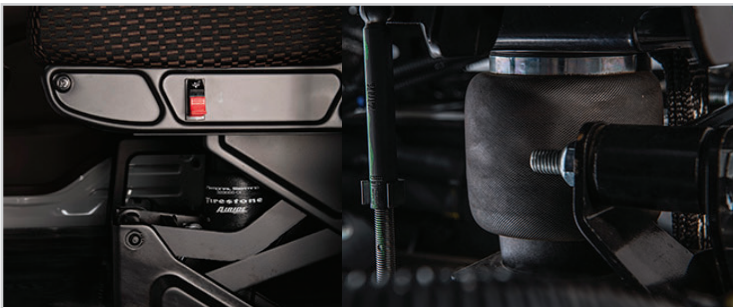
Ready to elevate your driving experience? Drive HINO.



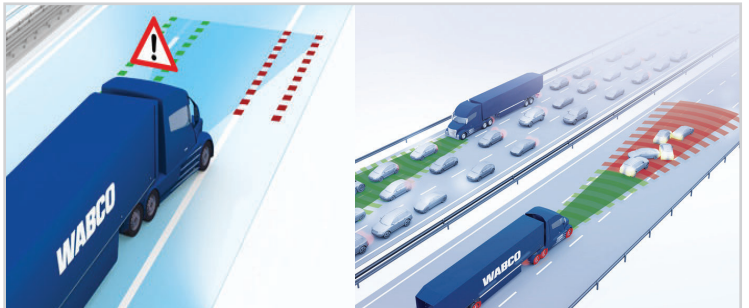
The Cummins® L9 Turbo Diesel engine is renowned globally for driving performance, economy, durability, and reliability.



Driver retention is tough. Bluetooth® radio, air ride driver's seat, USB charging port, A/C, cruise control, tilt & telescopic steering wheel will help. That's why they're **STANDARD!**



Layers of air between you and the bumpy road. Air suspension driver's seat and the Link Cabmate® air suspension cab are both **STANDARD.**



With the optional HINO Safety Suite, active safety systems, drivers are safer with the help of today's cutting-edge camera and radar technologies.

THE **HINO** EXPERIENCE: MUCH MORE THAN JUST TRUCK OWNERSHIP.



Engine Warranty

Standard 2 years, 402,336 kms (250,000 miles), including parts and labour on warrantable failures.



5 Year Warranty

Allison transmission warranty coverage for 5 years, unlimited mileage at no charge.*



HINOWATCH

24/7 Roadside Assistance is standard for 3 years on all HINO trucks with unlimited mileage. HINOWATCH includes lockout, out of fuel, battery jumpstart and warranty towing.

*Contact a HINO dealer for more information.

DISCLAIMER: Hino Motors Canada, Ltd. reserves the right to discontinue items, or make changes at any time, without notice, to equipment, specifications, or materials. The product images shown may represent the range of product or be for illustration purposes only and may not be an exact representation of the product.

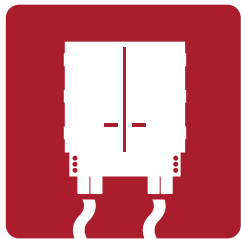
MKXLSERIES26E

[ACTIVE] Safety Systems

HINO
XL | SERIES



Safety starts before you start the engine. The HINO XL Series cab has been designed for safe, easy entry and exit with deep all-weather grip steps, extra wide door openings and available exterior grab handles. A high seating position and a 2,385 sq. in. windshield provide maximum visibility for the driver, illuminated at night with the standard LED headlamps. The advanced OnGuardMAX active safety systems are part of an optional Safety Suite package offered on select air brake equipped models.



***Electronic Stability Control**

Automatically intervenes when there is a high risk of directional instability that could lead to loss of vehicle control or rollover.

* Features available in optional Safety Suite package on select air brake equipped models.



***Collision Mitigation System**

Available radar-based collision mitigation system (OnGuardMAX) provides active braking on moving and stationary vehicles.



***Lane Departure Warning**

An available camera-based system that helps reduce road run-offs, side swipes, and head-on collisions due to driver inattention or fatigue through distinct audible warnings for unintentional lane departures.

ENGINE / DRIVETRAIN / AXLE

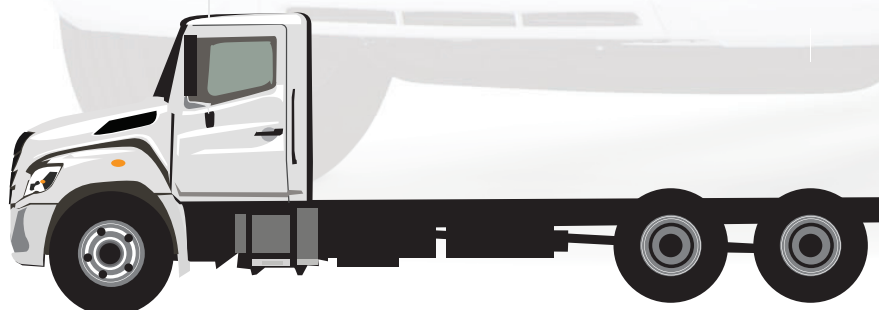
Engine model	Cummins® L9
Displacement / Type	Diesel 4-cycle, 6-cylinder, in-line, water-cooled
Turbocharger	Variable Geometry Turbocharger with Integrated Engine Braking
Fuel system	Bosch Common Rail, Direct Injection
Max. output @ 2,200 rpm	300 or 360 hp
Max. torque @ 1,200 rpm	860 or 1150 lb.-ft
Emission system	Cooled EGR with Single Module Aftertreatment
Transmission	Allison 3000 RDS, 6 speed automatic with FuelSense 2.0 with DynActive Shift Management, Neutral at Stop and Acceleration Rate Management
Front Axle	Dana E1462W, Reversed Elliot, I-beam
Rear Axle	Dana, DSH40/RSH40 full floating, single reduction, single speed

ELECTRICAL EQUIPMENT



Batteries	STD Two 12 volt, parallel connection, 1,850 CCA
Alternator	STD 12 volt, 135A Brushless
Starter kW (hp)	STD Delco Remy 39MT, 12 Volt, 6.4 kW

TANKS

Fuel tank	STD Single 189 litre (50 US gallon)
	OPT Single 340 litre (90 US gallon)
DEF tank litre (US gallon)	28 (7)



6X4 Wheelbase (in.)

			
*233	261	275	281
165.8	193.8	207.8	213.8

Cab to axle (in.)



HINO XL | SERIES



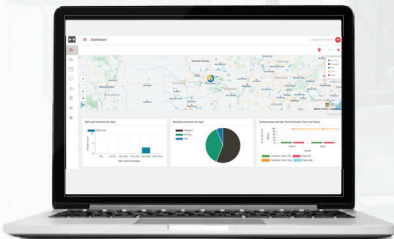
HINO is revolutionizing the connected vehicle experience with **HINO EDGE**, connecting customers to the **HINO Ultimate Support Center**, an extensive dealer network, and selected **Telematic Service Providers (TSPs)**. This maximizes truck visibility and service support, ensuring fleets have real-time access to essential information and resources, enhancing efficiency, and delivering the ultimate ownership experience.



Case Management



Get Logged In

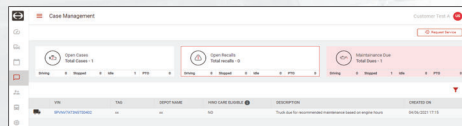


Getting started is easier than ever!

Simply log-in at hinoulimate.com with the username and password provided in your welcome email.

Once logged in, you'll have access all of your fleet's real time data.

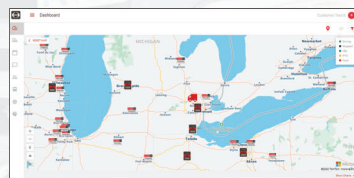
Then it's all about setting the system up the way that works best for you. Just go to the settings section of the portal and you can create new users, change times zones and select your preferred language and unit of measure.



You know your truck is in good hands when your Case Management system is powered by Decisiv and easily controlled through the HINO Ultimate Portal. If you have a fault code appear, you'll immediately get an email. Simply reply to that email to speak with a knowledgeable Ultimate Support representative. Then, in the Case Management tab, you can see all open cases.



Dashboard



The HINO Dashboard allows you to view your fleet's location, nearest dealer and how your fleet's utilization compares to others.

With HINO Benchmarking, you'll see a graphical snapshot of how you're doing compared to other similar vehicles in similar situations. Idle times, fuel economy... whatever data you need to optimize the performance of your fleet, you can find it here in real time. Never fly blind again!

Everything you need to maximize your fleet's ROI is right here, right now.

Weight Capacities

Front axle range, kg (lbs.): 6,350 (14,000) - 5,980 (13,200) on 281 wheelbase

Rear axle range, kg (lbs.): 18,143 (40,000)

HINO XL8

GVWR, kg (lbs.): 24,493 (54,000) - 24,131 (53,200) on 281 wheelbase

DAY CAB

Engine HP	300 or 360 hp	
Transmission model	Allison 3000 Rugged Duty Series (RDS)	
Brakes	STD Full Air with ABS	OPT Full Air with ABS & TRACTION CONTROL
Front axle/ suspension (kg/lbs.)	STD 6,350 (14,000), 5,987 (13,200) on 281 wheelbase only	
Rear axle/ suspension (kg/lbs.)		
Rear suspension type		
	STD Air, Hendrickson Comfort Air 40K	
Front tire size	STD 12R22.5-16, Rib	11R22.5-16 on 281 wheelbase
Rear tire size	STD 11R22.5-14, Lug	
Yield strength, kg/mm² (120,000 psi)	9mm: 84.4 kg/mm ² (233" WB only) 11mm: 84.4 kg/mm ² (261"WB only) Reinforced Frame, 9+5mm: 84.4 kg/mm ²	
Wheel type	STD Powder Coated White	OPT Accuride Aluminum

STANDARD EQUIPMENT

- Air Conditioning
- AM/FM Audio System with Bluetooth®
- Tilt & Telescopic Steering Column with Lock
- Power Windows & Power Door Locks
- Bright Finish Power and Heated Outer Rear-view Mirrors with Convex Mirrors (2)
- Passenger Seat - 2-person Premium Fabric
- Driver's Seat - High-back Premium Fabric Seat with Air Suspension & Arm Rest
- 1000W/120V Engine Block Heater
- Cruise Control
- Bright Finish Radiator Grille
- LED Headlamps
- Fully Trimmed Cab
- Driver Controlled Interaxle Lock

POPULAR OPTIONAL EQUIPMENT

- Driver Controlled Interaxle with Forward Tandem Axle Differential Lock
- Jacobs Engine Compression Brake
- Accuride Aluminum Wheels
- Third Battery
- Custom Paint Colours
- Multimedia Audio System with Bluetooth® and GPS Navigation
- Bright Finish Front Bumper
- 90G Tank
- Fender Mirrors
- Exterior Grab Handles with Passenger Look Down Mirror