

# Chapter 10

## MOUNTING DETAILS OF CHASSIS EQUIPMENT

---

1. FUEL TANK
2. AIR TANK
3. EXHAUST SYSTEM
4. DEF TANK

### ABOUT CAD-DATA

CAD-DATA is contained on separate attachment file in this CD-ROM.

CONTENTS ; · EXHAUST SYSTEM

## 1. FUEL TANK

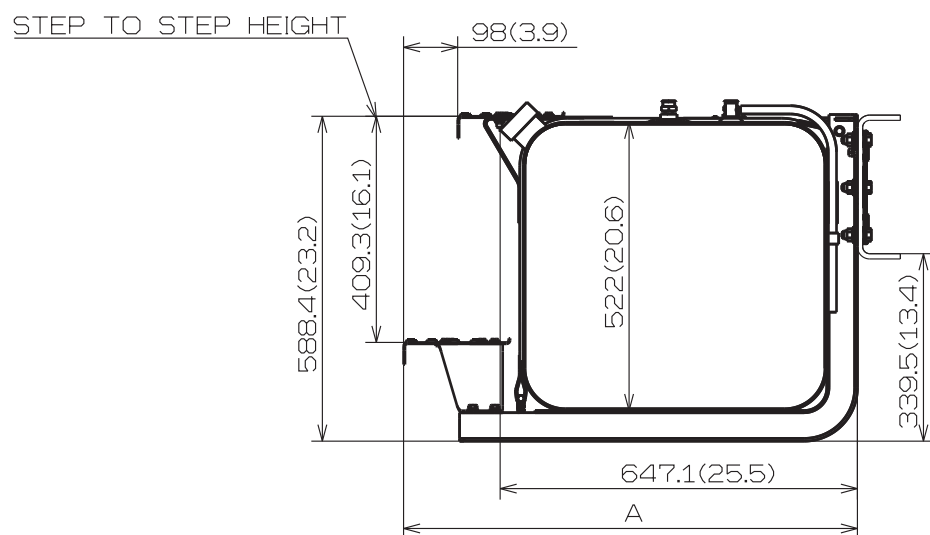
### MOUNTED LEFT SIDE UNDER CAB. (REAR VIEW)

#### WITH STEPS

CAPACITY : 189L (50gal)

340L (90gal)

Unit : mm (in.)



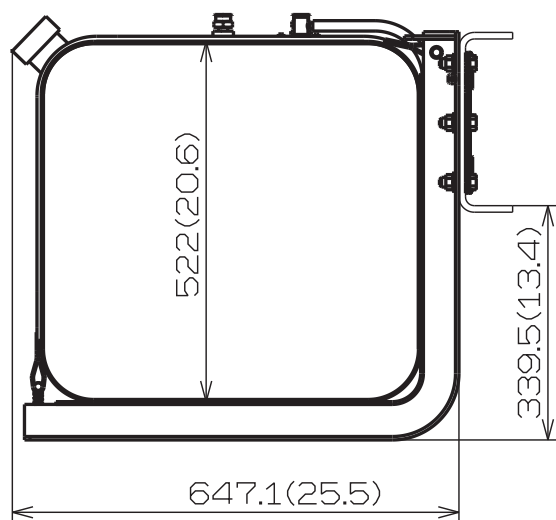
STEP POSITION	DIM A
FR STEP	822 (32.4)
RR STEP	823.7 (32.4)

DIM A = FRAME TO END OF STEP

REAR VIEW OF LEFT FUEL TANK SHOWN.

**MOUNTED LEFT SIDE UNDER CAB. (REAR VIEW)**  
**WITHOUT STEPS**  
**CAPACITY : 340L (90gal)**

Unit : mm (in.)

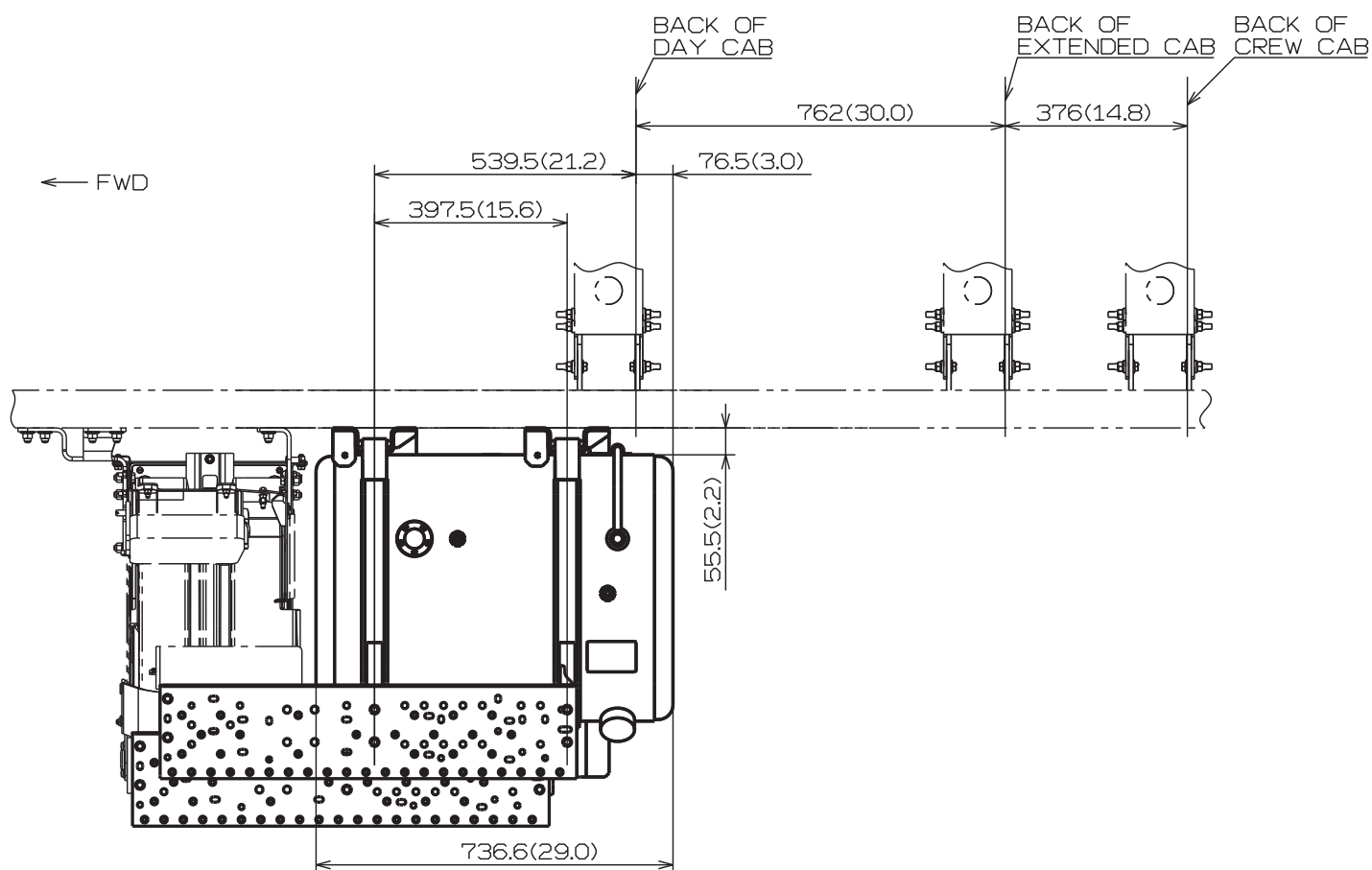


REAR VIEW OF LEFT FUEL TANK SHOWN.

# FUEL TANK WITH 2 MOUNTING STRAPS MOUNTED LEFT SIDE UNDER CAB. (TOP VIEW)

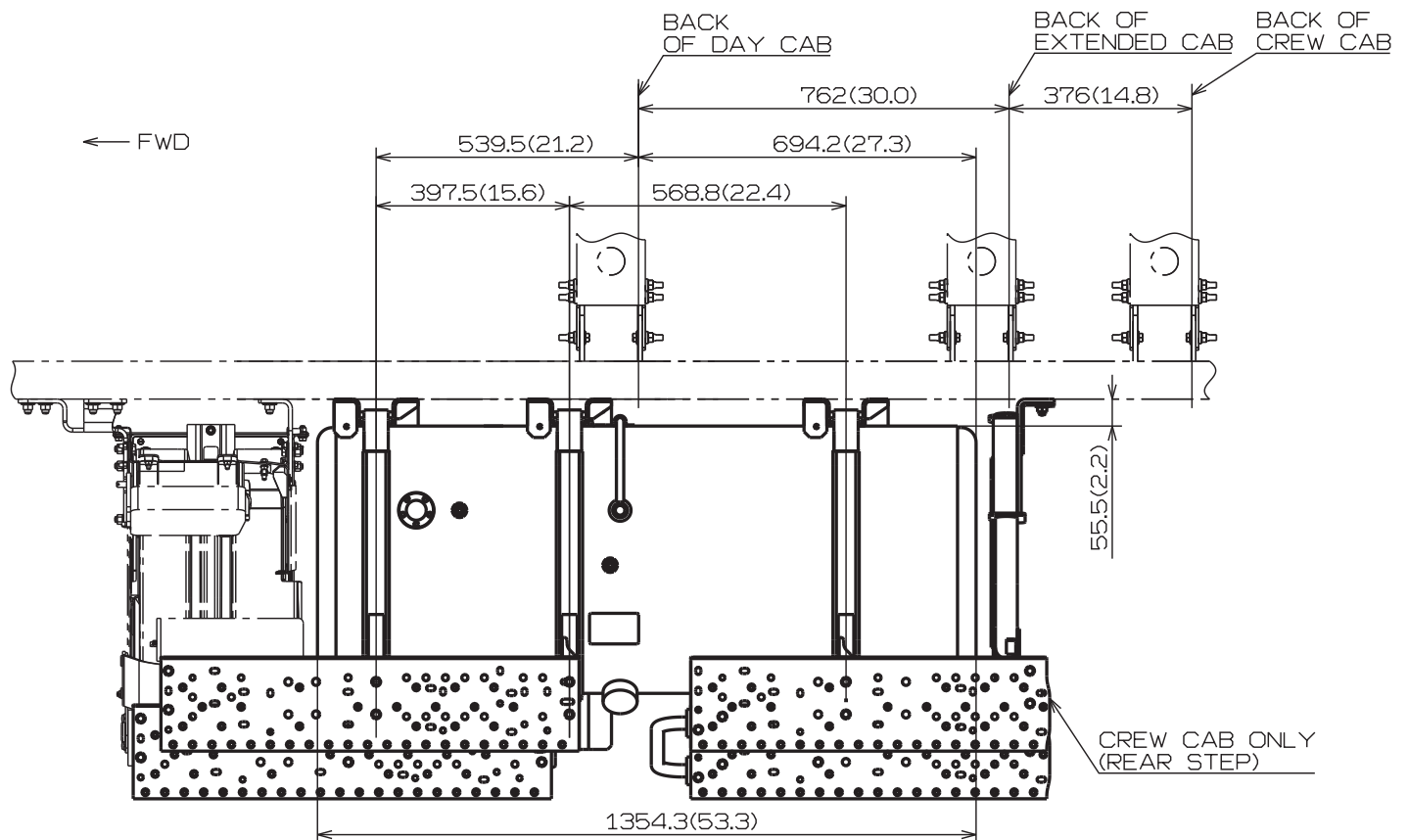
CAPACITY : 189L (50gal)

Unit : mm (in.)



**FUEL TANK WITH 3 MOUNTING STRAPS MOUNTED LEFT SIDE UNDER CAB. (TOP VIEW)****CAPACITY : 340L (90gal)**

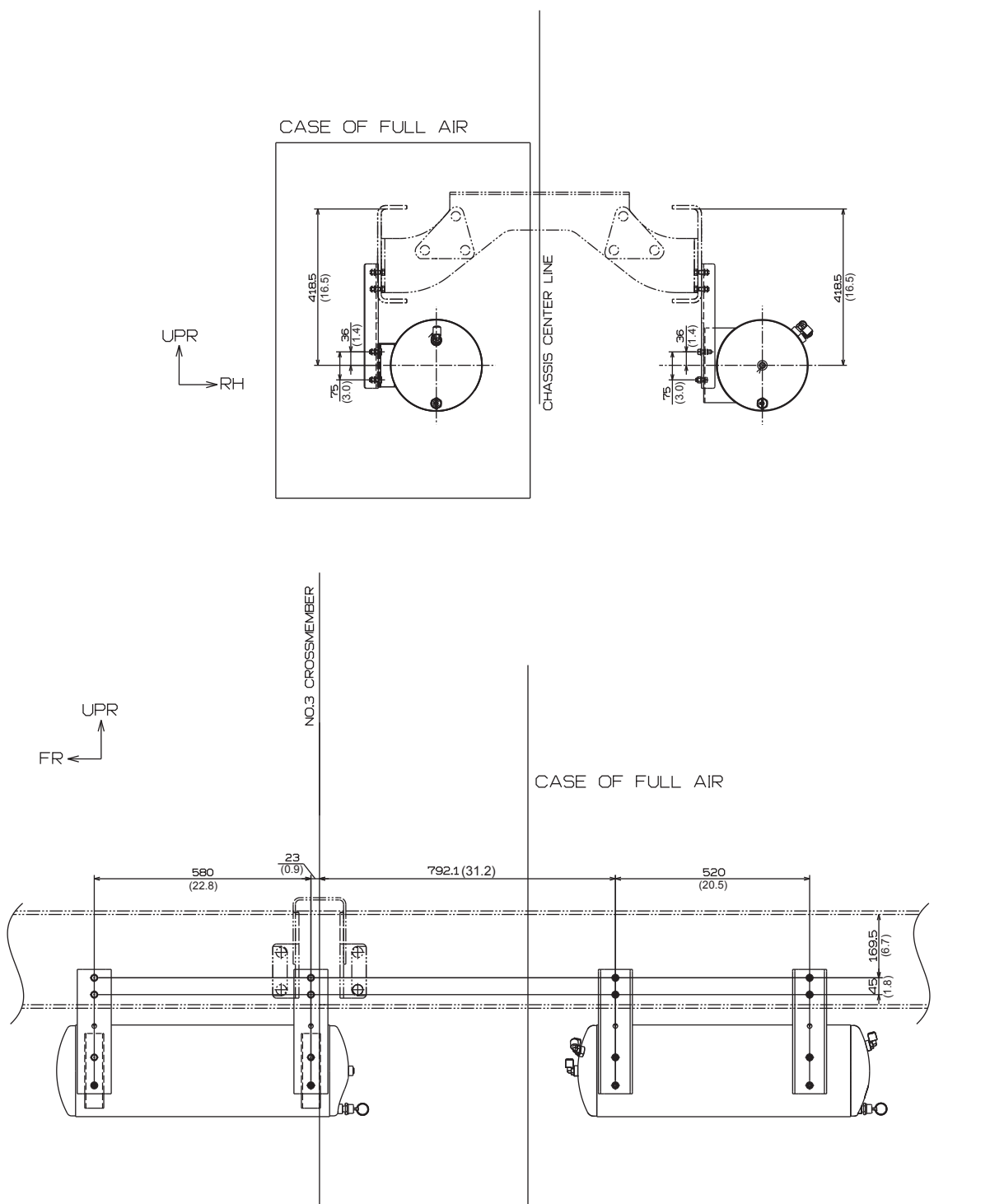
Unit : mm (in.)



## 2. AIR TANK

MODEL : NE(L6), NF(L7) <HYDRO>  
 NJ(L6), NV(L7), NH(L8) <FULL AIR>

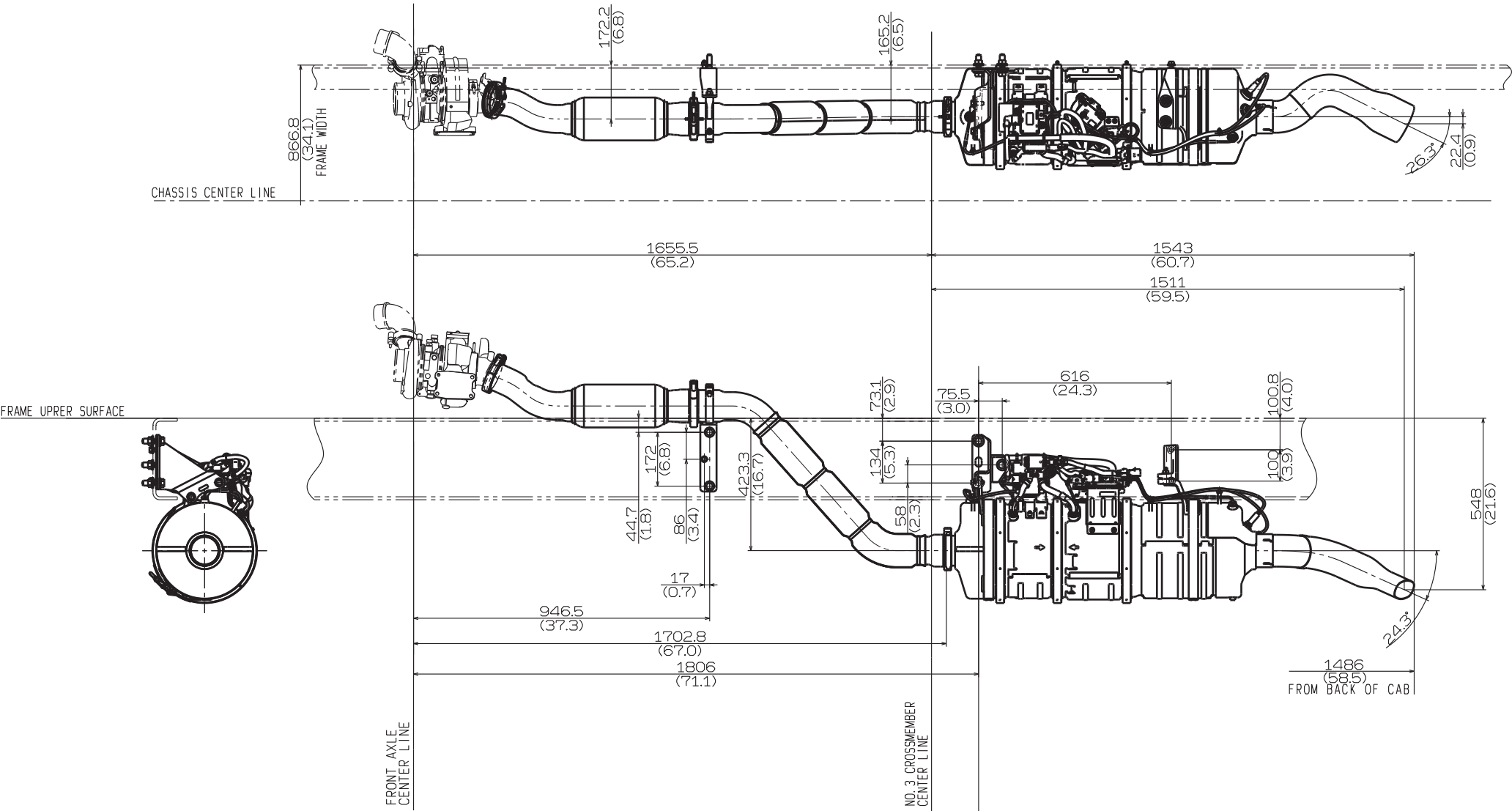
Unit : mm (in.)



3. EXHAUST SYSTEM

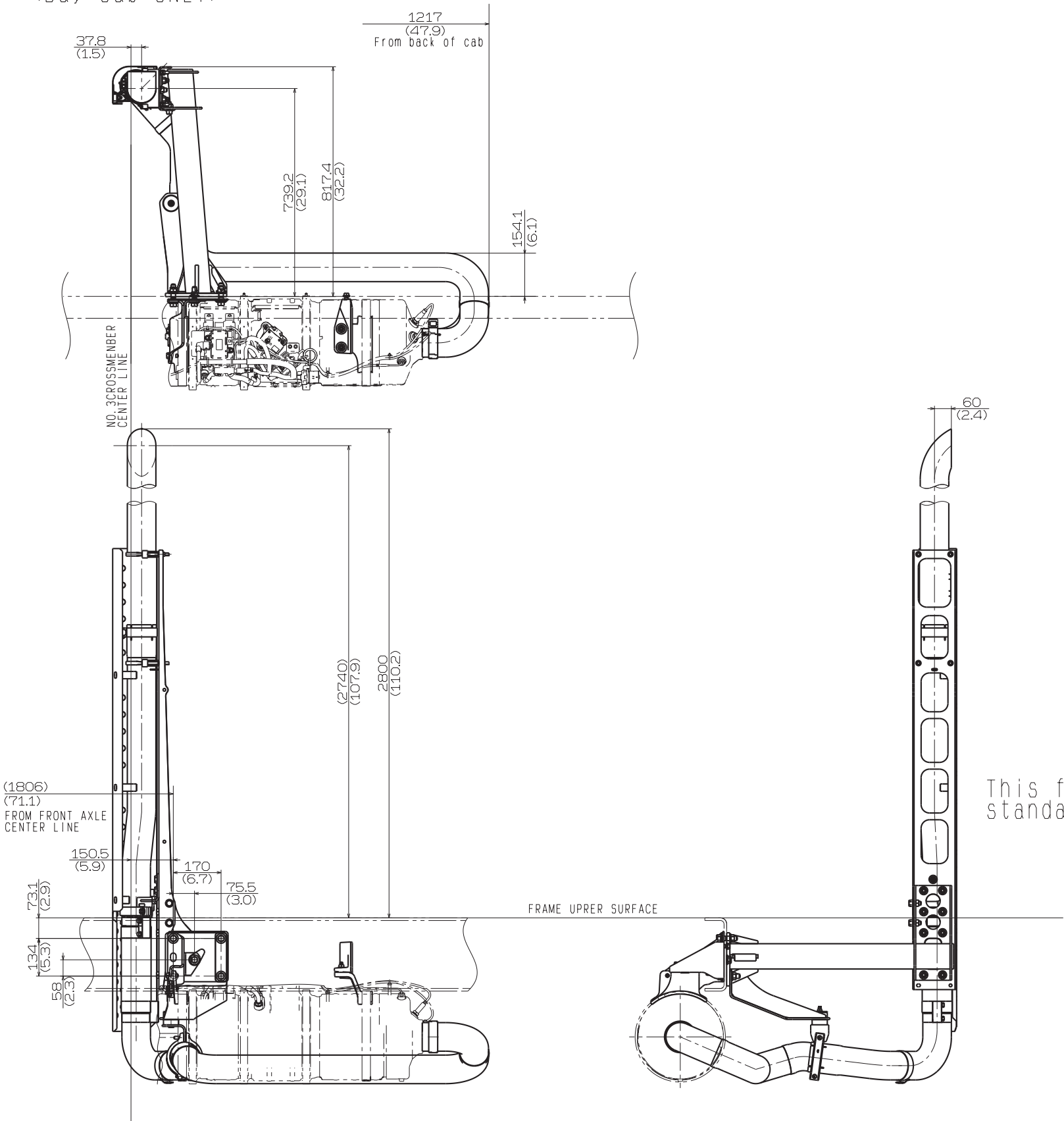
<Day Cab>

Unit : mm (in.)



VERTICAL TAIL  
<Day Cab ONLY>

Unit : mm (in.)





4. DEF TANK

Unit : mm (in.)

OPTION  
CAPACITY : 59L (15.6gal)

